



White Iron Picket Fence 1

ALEXANDRA ECKHARD

*J.P. Weaver Co.*  
SINCE 1914



## FINE INTERIOR ARCHITECTURAL MOULDINGS

DESIGNED AND HANDCRAFTED IN THE UNITED STATES SINCE 1914

2 Beautiful Vertical Scroll Railing [WWW.JPWEAVER.COM](http://WWW.JPWEAVER.COM)

JP WEAVER COMPANY • SINCE 1914 • 941 AIR WAY • GLENDALE, CA 91201  
TEL (818) 500-1740 • FAX (818) 500-1798 • [INFO@JPWEAVER.COM](mailto:INFO@JPWEAVER.COM) • [WWW.JPWEAVER.COM](http://WWW.JPWEAVER.COM)



Cascading Scrollwork Railing on Stairs & Overlook #3

*J.P. Weaver Co.*  
SINCE 1914



PHOTOGRAPHY BY JOSHUA KAST

## FINE INTERIOR ARCHITECTURAL MOULDINGS

DESIGNED AND HANDCRAFTED IN THE UNITED STATES SINCE 1914

[WWW.JPWEAVER.COM](http://WWW.JPWEAVER.COM)

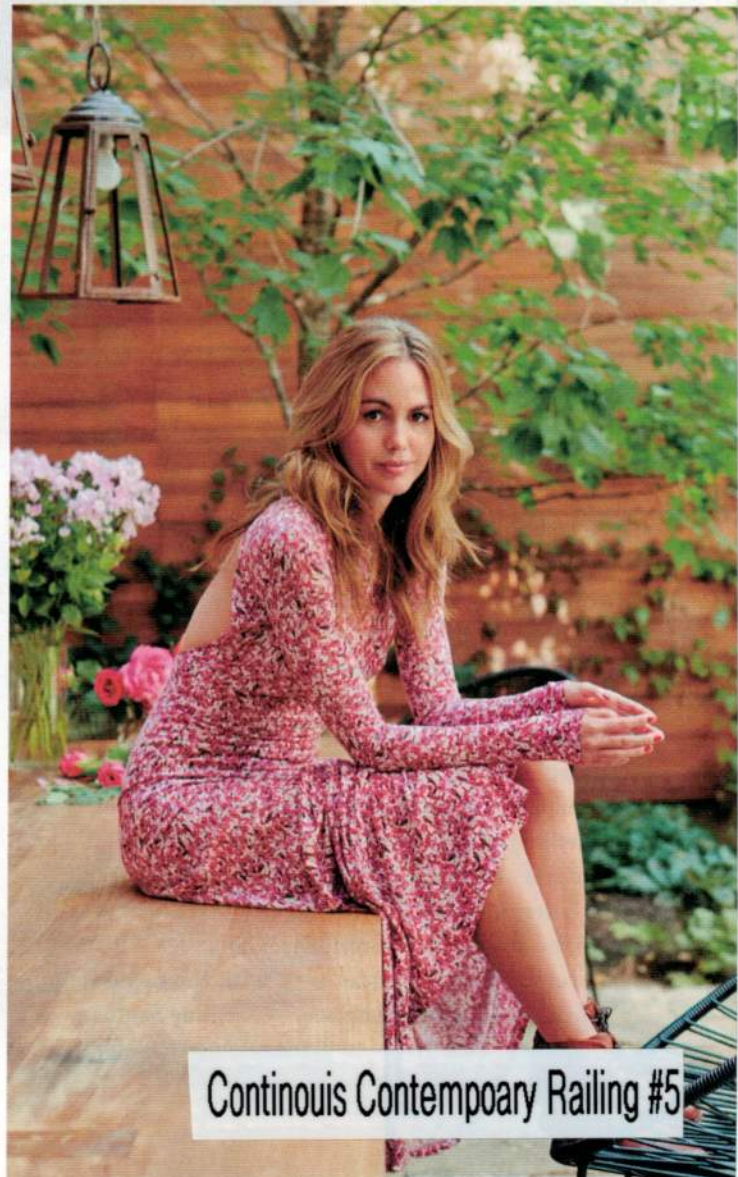
#4 Iron Scrolls w Gold Leaf

JP WEAVER COMPANY • SINCE 1914 • 941 AIR WAY • GLENDALE, CA 91201 V7/13  
TEL (818) 500-1740 • FAX (818) 500-1798 • [INFO@JPWEAVER.COM](mailto:INFO@JPWEAVER.COM) • [WWW.JPWEAVER.COM](http://WWW.JPWEAVER.COM)

# HIGH IMPACT

Decorator Laura Santos makes her mark on the New York design scene with a grandly scaled yet welcoming townhouse for her family

TEXT BY MAYER RUS  
PHOTOGRAPHY BY NIKOLAS KOENIG  
PRODUCED BY HOWARD CHRISTIAN



Continous Contemporary Railing #5



**T**hin may be in when it comes to fashion, but in the exclusive realm of Manhattan townhouses the prevailing attitude is the broader the better. Four years ago rising star decorator Laura Santos and her husband happened upon three adjacent rowhouses under construction—and for sale—in Greenwich Village. Seizing the rare opportunity, they decided to purchase two of the properties and combine them into a sprawling five-story residence measuring a remarkable 46 feet wide.

“I was afraid of a townhouse being too dark or spatially awkward,” recalls Santos, a native of Colombia who came to New York by way of Paris in 2000 and later studied at Parsons the New School for Design. “By joining two of them we changed the proportions to something more square, with added light and air.”

The story of their home actually begins in 2007, when a developer hired the firm 1100 Architect to design the original trio of residences on a vacant lot. The project was well under way, with the façade and structural elements in place, by the time Santos



#6 Continuous Contemporary Railing on stair

# AD



Cool and calm: A shady allée welcomes guests to Ralph Lauren's estate in Bedford, New York.

# SEPTEMBER

Magnificent Iron Gates #7

Bookshelves on the landing define an intimate reading nook. Chandelier, Tony Duquette for Remains Lighting. OPPOSITE, LEFT: Antique Italian table. Circa 1950 wallpaper mural, Elizabeth Duquette. OPPOSITE, RIGHT: Jewelry, Tony Duquette. Antique malachite bear and Chinese lamp.



#8 Beautiful Elliptical Railing on an overlook



Velvet upholstery, a mural of Venice, and gleaming black-granite floors make a dramatic statement in an alcove off the living room. Mural, Scarlet Abbott. OPPOSITE: Hutton Wilkinson on a sofa custom made by Tony Duquette. OPENING PAGES, LEFT: Custom table. Antique Chinese coral branches. 17th-century Venetian painting. OPENING PAGES, RIGHT: Ceiling fixture, Tony Duquette for Remains Lighting. Curtain fabric, Tony Duquette for Jim Thompson. Glassware, Baccarat.



Beautiful Elliptical Railing on a stairway #9



#10 Iron Doors & Transom



Iron Railings & Balconies #11



#12 Distinctive Forged Railing



# *Parisian Panache*

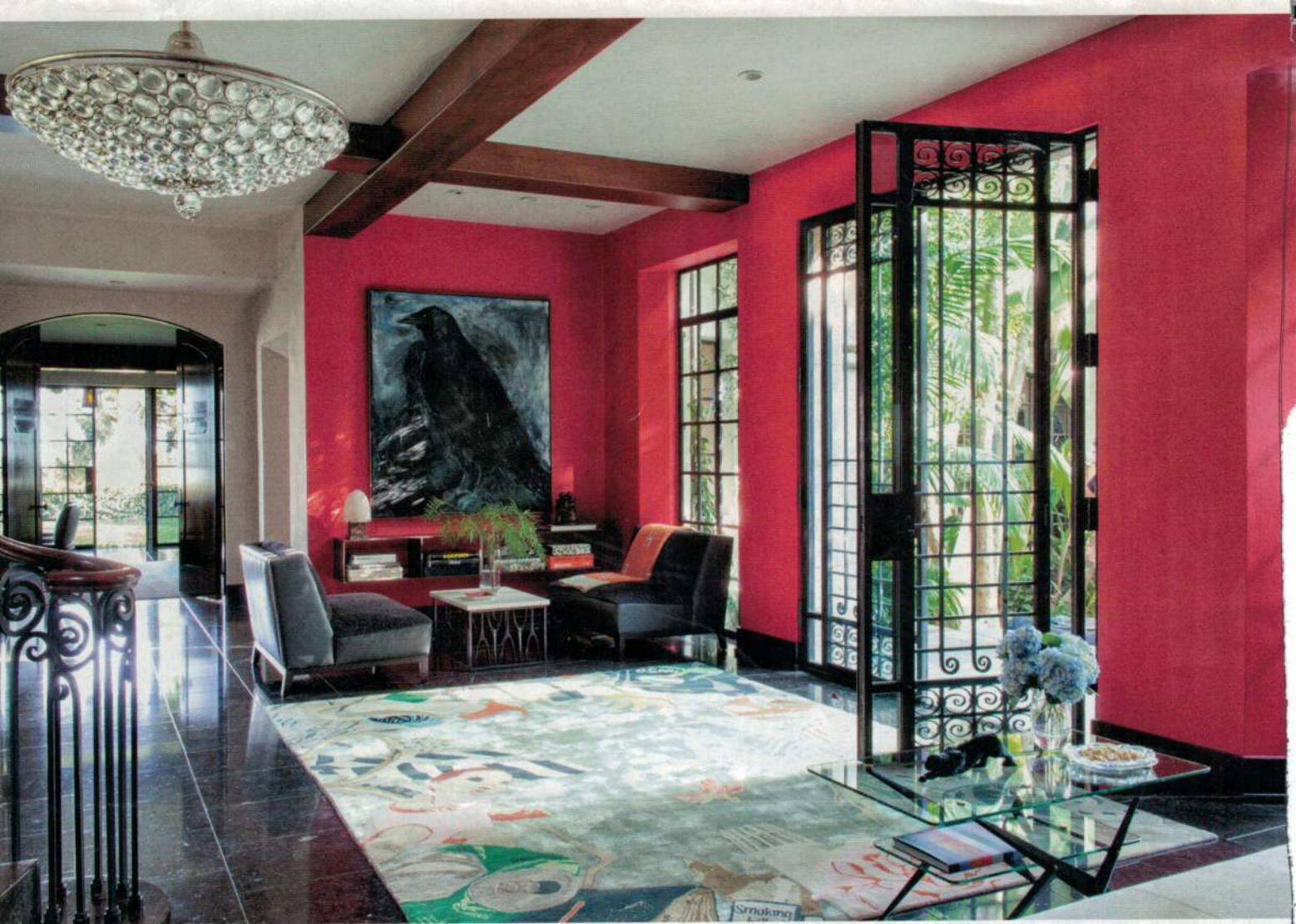
WITH A FRENCH MASTER AS HER MENTOR, AN  
AMERICAN CREATES A HOME ON THE LEFT BANK.

Antique French Railing #13



"I'M A COLLECTOR OF ODDITIES," SAYS CROW,  
"STUFF THAT IS SOMEHOW OFF-CENTER OR OFF-KILTER."

#14 Simple, but elegantly twisted Railing



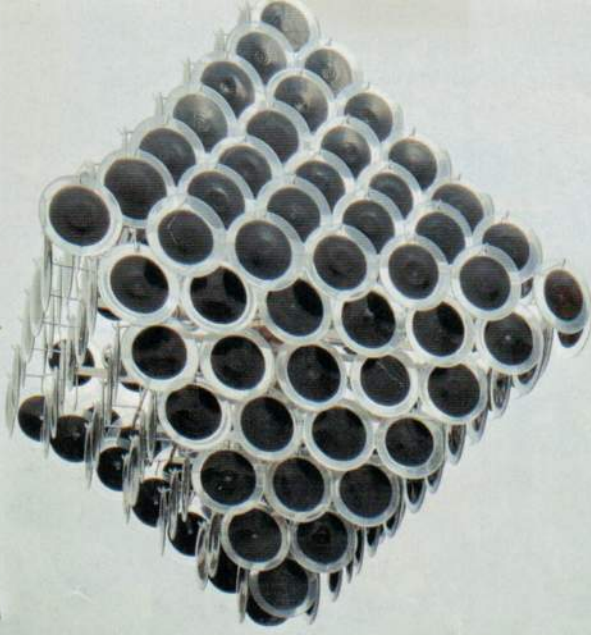
**From top:** A Jim Dine painting hangs in the entrance hall; the light fixture is by Mark Brazier-Jones, the orange throw is by Hermès, and the carpet is by the Rug Company. In the living room, a Jessica Rice triptych overlooks a Vladimir Kagan sofa from Ralph Pucci International and a Jean de Merry cocktail table; the carpet is by Christopher Farr.

**Opposite, from top:** Peter and Tara Guber with their Labradoodle, Archie. Sculptures by Henry Moore and Calder grace the lawn. The pool area is paved with bluestone.



Scrolly Volute & Iron Doors #15

A series of portraits by Jackie Terrell hangs near a Calder-inspired weaving on a staircase landing; the vintage Vistosi light fixture is from John Salibello.



#16 Forged Scrollwork on Stairway





# Joie de Vivre



GLOBE-TROTTING CHRISTIAN DIOR P.R.  
EXECUTIVE MATHILDE FAVIER-MEYER  
BRINGS FREE-SPIRITED COLOR, PATTERN,  
AND PERSONALITY TO A  
TRADITIONAL PARIS APARTMENT

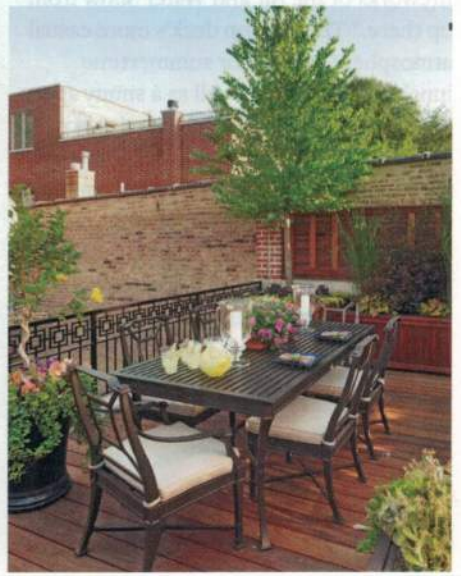
TEXT BY IAN PHILLIPS  
PHOTOGRAPHY BY PASCAL CHEVALLIER  
PRODUCED BY CYNTHIA FRANK



Exquisite Iron Stair Railing #17



#18 Exquisite Stair Railing







W

hen designer Steven Gambrel visited a Manhattan couple's apartment on the Upper East Side for the first time, he was captivated by their 1912 building's Renaissance palazzo

architecture—and by its rich history. The work of the venerable firm McKim, Mead & White, the 12-story limestone structure was commissioned by James T. Lee, a grandfather of Jacqueline Kennedy Onassis. Notably, it was conceived as the neighborhood's first luxury residential building, with supremely elegant units offering plentiful fireplaces, dependable wall safes, and other amenities intended to convince the upper class to abandon its mansions and townhouses for the novel convenience of apartment living.

A century on, its charms still seduce, attracting a young real-estate investor and his wife, who acquired a spacious duplex at the address and enlisted Gambrel to sensitively update the rooms. "They told me this would be their dream apartment and their final home in Manhattan," the designer says. "So we renovated and furnished it with the knowledge that it should stand the test of time stylistically and functionally."

Gambrel was delighted by the challenge of creating interiors

compromising the dwelling's early-20th-century spirit. "Steven has flawless taste," the wife says. "We also sensed his deep respect for historical architectural details. We knew he wouldn't be tempted to rip out the existing elements we loved."

Working with architect Martin Sosa of Arcologica, a longtime collaborator, Gambrel seamlessly melded old and new. Many of the duplex's original details were retained, especially in the public areas: the entry's limestone floor, the staircase's ironwork balustrade, the living and dining rooms' moldings and paneling (in some cases, invisibly altered to accommodate HVAC enhancements), and most of the marble mantelpieces throughout.

But Gambrel persuaded the couple to undertake a number of key revisions. For starters, he argued that the lower floor's seven-foot-high doors weren't tall enough for such grand entertaining spaces. So he lobbied successfully for new versions, 12 inches taller, made in solid mahogany just like the originals—which were moved upstairs to replace the bedrooms' simple painted doors.

As part of Gambrel's efforts at "younging up" the traditional interiors, as the designer playfully puts it, he made strategic use of high-gloss finishes, including on the ceilings of the living and dining rooms. "The millwork and plasterwork were so elaborate they could have been perceived as fussy," he says. "Our

#20 Superbly Forged, Iron Railing



Simple, but Elegant Oval Railing #21

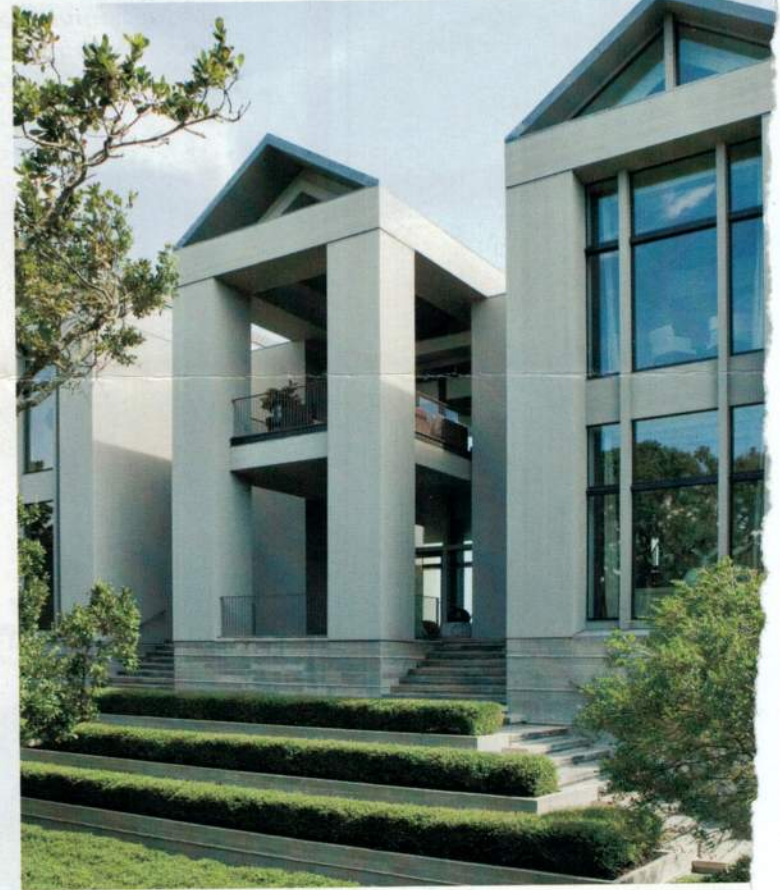
Live Well.

ADAC

ATLANTA DECORATIVE ARTS CENTER

351 PEACHTREE HILLS AVENUE NE, GEORGIA 30305 404.231.1720 WWW.ADACATLANTA.COM

ADAC 2010 SOUTHEAST ARCHITECT OF THE YEAR WINNER: D. STANLEY DIXON ARCHITECT, INC. / EMILY FOLLOWILL PHOTOGRAPHY



#22 Stately, but Simple Railing

Saladino replaced a single door with antique Spanish double doors to match the scale of the house. THIS PAGE: Doors, Michael Haskell Antiques. OPPOSITE: Chairs, Saladino Furniture, in Kohli Silk. Custom table. Sconces, Art & Style. Curtains in Métaphores taffeta; Samuel & Sons trim. Mosaic border in floor, Artistic Tile.



Iron Romeo Balcony #23

The homeowner's photography collection introduces touches of modernism. THIS PAGE: Art, Res. Chandelier, Minton-Spidell. RIGHT: In loggia room, chair in Roger Arlington silk, tube lamp, tripod table and sofa in Marvic Textiles chenille damask, all Saladino Furniture. Custom coffee table of Roman marble. Floor lamps, Munder-Skiles. Louis XIII fauteuils. Antique Gibbons mantel. Curtains in Métaphores taffeta. Lantern, Country House Antiques.



JOHN SALADINO CALLS THE ORIGINAL DWELLING THAT STOOD ON HIS CLIENTS' PROPERTY IN SANTA BARBARA "A HOUSE BUILT FOR RESALE." HE IS BEING charmingly diplomatic. The unremarkable spec house offered only a vaguely Mediterranean style. But in the hands of this preeminent designer—known for his exquisitely soft use of color and his attention to human scale amid splendor—it has been utterly transformed.

The house is now distinguished not only by its new, classical architectural details and its inviting atmosphere but also by its surrounding parklike landscape, created through the purchase of adjoining property.

"I turned it into a small estate," says Saladino. "You have a view of the Pacific, and you don't see any neighbors."

## #24 Iron Railing w Face Mount Posts







Stewart lightened the mood inside by replacing some of the existing formal furnishings with faux-bois pieces; in the entrance hall, a vintage bench and a Martha Stewart-designed console rest on granite pavers. **Opposite, from left:** Seal Harbor as seen from the house. Kiwi vines climb up the rear of the dwelling; the terrace and naturalistic landscaping were designed by Jens Jensen in the 1920s.

Sotheby's

MONOCHROME

A New Vision for Chinese Art

Auction New York 15 September 2015  
Viewing 11-14 September, 1334 York Avenue  
Enquiries +1 212 606 7332  
[Sothebys.com/AsiaWeek](http://Sothebys.com/AsiaWeek)

SOTHEBY'S, INC. LICENSE NO. 1216058. © SOTHEBY'S, INC. 2015



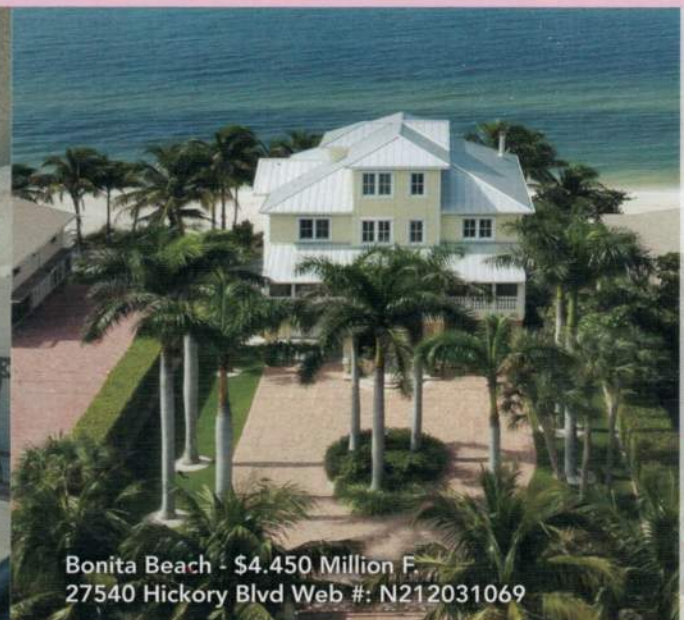
# Exclusively Presenting The

Resplendent



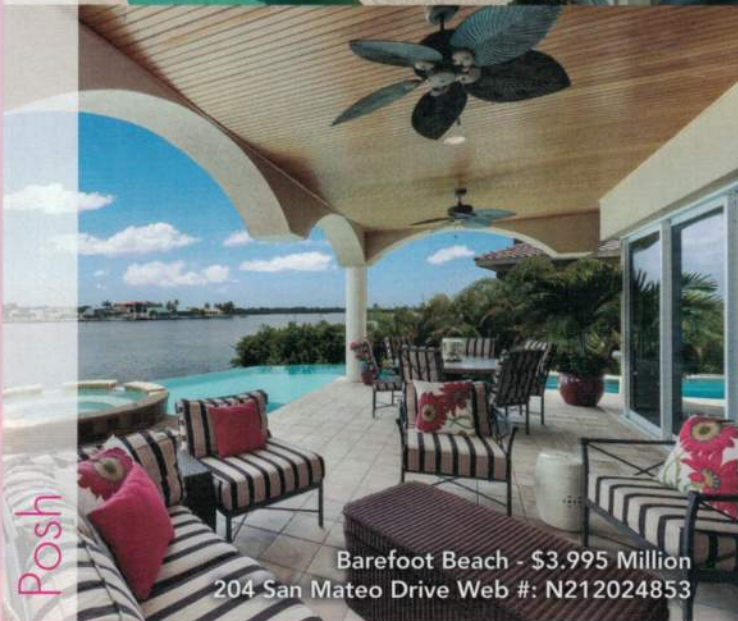
Aqualane Shores - \$5.999 Million  
1935 8th Street South Web #: N212035441

Splendorous



Bonita Beach - \$4.450 Million F.  
27540 Hickory Blvd Web #: N212031069

Posh



Barefoot Beach - \$3.995 Million  
204 San Mateo Drive Web #: N212024853

Opulent



Park Shore - \$2.125 Million  
3971 Gulf Shore Blvd N. #1203 Web #: N213011442

**Naples  
Estate  
Properties**

Presenting Properties Exclusively  
In Excess Of One Million Dollars

*Global Network*

EXCLUSIVE AFFILIATE OF  
**CHRISTIE'S**  
INTERNATIONAL REAL ESTATE

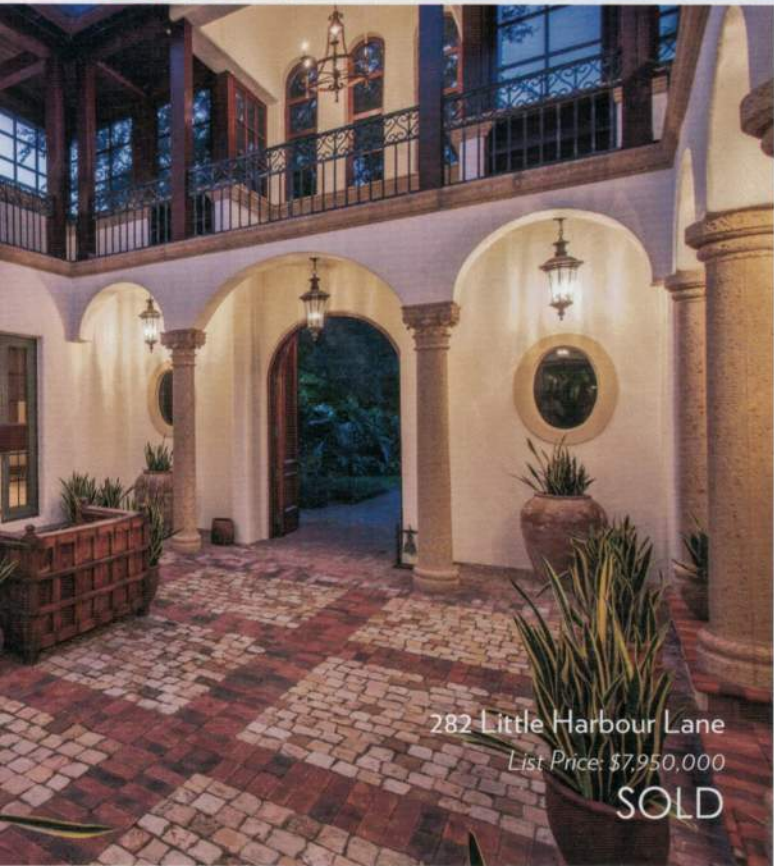
Luxury Portfolio International  
Who's Who in Luxury Real Estate  
FIABCI International Real Estate Federation

296 14th Avenue South (At 3rd Street)  
Naples, Florida

**Safety Railings w Style #27**



4100 Gulf Shore Boulevard North  
Available: \$5,700,000



282 Little Harbour Lane  
List Price: \$7,950,000  
**SOLD**



3045 Fort Charles Drive  
List Price: \$11,950,000  
**SOLD**

# MICHAEL G. LAWLER

4300 Gulf Shore Boulevard North, Suite 100  
Naples, Florida 34103  
239.261.3939  
michaellawler.com



#28 Forged Aluminum Railings

Sotheby's International Realty and the Sotheby's International Realty logo are registered service marks used with permission. Each office is independently owned and operated. Equal Housing Opportunity.



When American John McSwaney and his British-born wife, Christine, bought their apartment in Burley on the Hill, a circa-1700 manor located in the English countryside two hours north of London, they set themselves a simple but formidable goal for the renovations. “We wanted to create something the original owners would have been proud of,” declares John.

Those owners were the Finch family, a clan that boasts the earls of Nottingham and Winchilsea. “They were one of the families that dominated the county,” John explains. “The house stands near the road from London that everyone traveled, including kings and queens. Winston Churchill may have slept in our bedroom, so to make it American and modern didn’t feel right.” It was Daniel Finch, the second Earl of Nottingham, who began constructing the Palladian mansion in the 1690s, possibly serving as his own architect. Approaching from the north, one passes through a splendid cour d’honneur, with long, curving colonnades linking the house to the stables. Arguably more splendid still is the building’s southern view, a wooded deer park bordered in the distance by Rutland Water, a sweeping man-made lake.

Burley stayed in the family until around 1990, when it was sold to a Turkish businessman intent on turning the place into a resort. Part of the estate eventually wound up in the hands of English restoration expert Kit Martin, who converted its buildings into multiple residences, carving six generous apartments



**From top:** The property’s ironwork gates. The Adam Room, which serves as the McSwaneys’ drawing room, is distinguished by 16-foot columns and intricate plasterwork; the ceramic table lamps at left are by Vaughan. **Opposite:** In the same space, Mark Gillette designed the Claremont-fabric window treatments to match the dusky pink he used on the ceiling. The sofas are also by Gillette: The one at left, upholstered in a Brunswick & Fils damask, is placed next to a Vaughan floor lamp, while the other is flanked by Vaughan lamps on Soane Britain side tables.



# A PIECE OF HISTORY

Set within Burley on the Hill, a 300-year-old English country estate, an apartment graced with soaring columns and exquisite plasterwork is brought back to glorious life by designer Mark Gillette

DESIGNED BY ANTHONY GARDNER PHOTOGRAPHY BY LUKE WHITE PRODUCED BY HOWARD CHRISTIAN

#30 Iron Entry Railings

# *Continental Charm*

A FRANCOPHILE BUILDS A HOUSE  
TO MATCH THE OLD WORLD ANTIQUES SHE'S  
BEEN COLLECTING FOR DECADES.

Regal, Forged Iron Railing #31

INTERIOR DESIGN BY PEGGY STONE  
ARCHITECTURE BY DUANE STONE & ASSOCIATES  
LANDSCAPE ARCHITECTURE BY DONALD HOOTEN  
PHOTOGRAPHY BY PETER VITALE  
PRODUCED BY LESLIE NEWSOM RASCOE  
WRITTEN BY CHRISTOPHER PETKANAS

# ON THE MARKET

AD editors select extraordinary homes for sale around the world **WRITTEN BY ASAD SYRKETT**



## Eure, France

**12 BEDROOMS**  
**4 BATHS**  
**5 HALF BATHS**  
**10,000 SQ. FT.**  
**\$16.4 MILLION**

**PEDIGREE:** Old-world elegance prevails at this historic chateau—some 45 miles west of Paris and once

home to American heiress Consuelo Vanderbilt Balsan. Sporting a graphic façade of stone and brick, the turreted three-story residence presides over some 220 acres. Among the interior's exquisite details are boiserie-lined walls and parquet de Versailles floors.

**PROPERTY VALUES:** In addition to an orangerie and a caretaker's house, the estate includes a swimming pool, stables, and a pond.

**TALKING POINT:** King Henry IV of France and Winston Churchill are said to have been guests here.

**CONTACT:** Belles Demeures de France, 011-33-6-85-82-47-70

FROM TOP: COURTESY OF DANIEL FEAU CONSEIL IMMOBILIER/CHRISTIE'S INTERNATIONAL REAL ESTATE; GUILLAUME GAUDET (2); JEFF GOLDBERG/ESTO

## Old Greenwich, Connecticut

**PEDIGREE:** Set on Long Island Sound, this award-winning 2008 house was designed by Joeb Moore & Partners. The rectilinear waterfront elevation belies the structure's daring form, which twists in an asymmetrical U-shape. Expansive windows punctuate an exterior clad in rugged cedar fins.

**PROPERTY VALUES:** The dwelling, which sits on nearly half an acre, adjoins a quiet private beach and includes membership to the Shoreham Shore Club.

**TALKING POINT:** As a result of its dynamic configuration, the residence is nicknamed the Spiral House.

**CONTACT:** Houlihan Lawrence, 203-536-4997

**4 BEDROOMS**  
**4.5 BATHS**  
**4,500 SQ. FT.**  
**\$6.5 MILLION**



#32 Antique Fench Gate



**4 BEDROOMS**  
**5.5 BATHS**  
**5,600 SQ. FT.**  
**\$48 MILLION**

## New York City

**PEDIGREE:** This immaculate Central Park West penthouse crowns the Prasada, a venerable 1907 building conceived by architects Charles W. Romeyn and Henry R. Wynne in the Second Empire style. The AD100 firm Shelton, Mindel & Associates transformed the apartment, which boasts soaring ceilings (some double height), 45 windows, and four exposures. An open plan, gleaming hardwood floors, and a top-of-the-line kitchen imbue the aerie with a casually luxurious feel.

**PROPERTY VALUES:** A beautifully landscaped rooftop deck offers an additional 3,000 square feet of space and sweeping views of the skyline.

**TALKING POINT:** The Prasada helped popularize apartment towers—rather than private houses—along the now-legendary thoroughfare.

**CONTACT:** Brown Harris Stevens Residential Sales, 212-906-9274 →





# SMOOTH SAILING

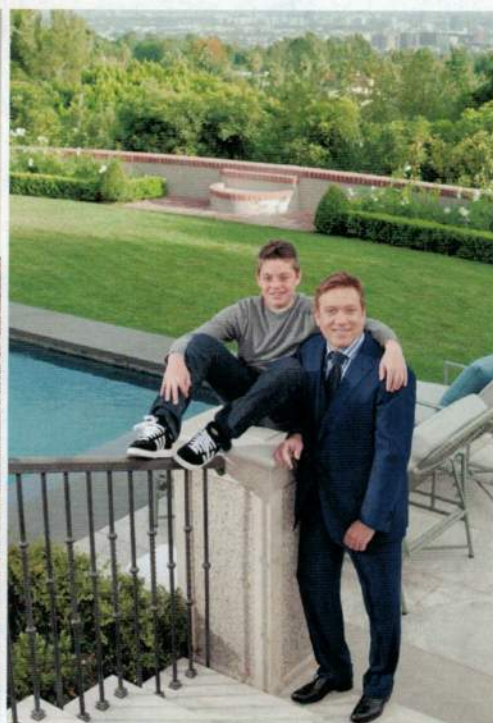
Designer Mariette Himes Gomez leaves her stylish mark on the serene mansion of a philanthropic couple on Long Island's Edenic North Shore

TEXT BY JEN RENZI PHOTOGRAPHY BY ROGER DAVIES PRODUCED BY HOWARD CHRISTIAN



At a Long Island, New York, neo-Colonial mansion (opposite), an infinity-edge pool with bluestone coping overlooks Oyster Bay Cove. The house's architecture is by Kean Williams Giambertone, and its interiors are the work of designer Mariette Himes Gomez of Gomez Assoc. For details see Sources.

Simple, but elegant pool barrier #33



One of the managing partners of Creative Artists Agency, arguably the world's most powerful talent repository, Kevin Huvane steers the careers of individuals so famous—Meryl, Nicole, Oprah, and the like—they don't need surnames. Given that star-studded portfolio and his own lifelong love of movies, it seemed destined that this unpretentious bigwig ("I'm a kid from the Bronx," he says) would end up captivated by a house that embodies the golden age of motion pictures.

Huvane had been living in a renovated Cape Cod in Los Angeles's Benedict Canyon when a Realtor tempted him with a grander property in Beverly Hills that suggested an intriguing past: a 1930 half-timbered mansion with steep storybook gables. "As soon as I got past the gates, I knew I was in trouble," Huvane says with a grin, adding that the two-acre spot's picturesque allure was amplified by a lazy drive and a tree-shaded tennis court. "It felt like a house where Hollywood people had lived."

Indeed they had. Architect Arthur R. Kelly, a master of homes graced with "dignity, a tranquil good taste and refinement," according to a 1922 article in *The Building Review*, created the structure, once known as Nine Gables, for Johnny Mack Brown, a former all-American halfback whose promising career as a leading man at MGM was cut short when his Alabama drawl proved unsuited to A-list talkies—and by the arrival of Clark Gable. (Huvane later discovered photographs of Ginger Rogers playing Chaplin attending

a garden party there.) Sadly, the interiors—which originally had been decorated by celebrated Massachusetts antiquarian Henry Davis Sleeper and augmented by Sleeper's favorite architect, Halfdan M. Hanson—weren't exactly ready for their close-up. In the '50s Brown, by then a fixture of B-grade Westerns, and his wife sold the house to family friends, who remodeled some of the rooms in infelicitous ways. Fortunately, when Huvane described the place to designer and friend Michael S. Smith over lunch, the latter was familiar with each and every tantalizing detail—he had once considered purchasing the Kelly charmer himself.

"We were immediately on the same page," Huvane recalls. Smith was tapped for the decorating duties, and he brought on board Oscar Shamamian and Brian Covington, of Manhattan's Ferguson & Shamamian Architects, to plan a sensitive renovation. "I told them I wanted the house to be comfortably elegant," says the agent, who shares the 9,000-square-foot dwelling with his teenage son, Declan. "Not a place that feels like there should be velvet ropes."

That being said, Smith and Shamamian faced quite a job reviving the mansion's glory days—or, more to the point, inventing a finer architectural heritage for it. Since the previous owners' alterations had undermined the structure's aesthetic integrity, the team felt free to modify the floor plan and ennoble the envelope. A wall of the family room was bumped out to provide enough of a platform so the master bedroom above could have a balcony. Windows were carefully enlarged to maximize

**Above, from right:** Kevin Huvane and his son, Declan. Los Angeles architect Arthur R. Kelly designed the 1930 half-timbered dwelling, which was christened Nine Gables; its brickwork and stucco are painted in Farrow & Ball's Hardwick White.

## #34 Aluminum Stair Railing

# CARL MOORE

## ANTIQUES

CLASSIC STYLE FOR A MODERN AGE



*Istdibs*



SHOP [CARLMOOREANTIQUES.COM](http://CARLMOOREANTIQUES.COM)

1610 BISSONNET STREET, HOUSTON, TEXAS 77005

PHONE 713.524.2502 • 877.916.2497

RETAIL/TO THE TRADE

Curved Iron Stair Railing #35



## A STAR IS REBORN

CHANEL REVIVES ITS  
LEGENDARY 1932  
COLLECTION, BRINGING  
BACK CELESTIAL  
JEWELS THAT  
TRANSCEND TIME.

**b**y the 1930s, Gabrielle “Coco” Chanel had already made some bold moves: She was famous for redefining 20th-century fashion, creating her own perfume, and accessorizing her runway models with costume jewelry. But in spite of the economic crisis,

she followed her instincts and showed an opulent platinum and diamond jewelry collection instead of “amusing trinkets,” she reaffirmed her place as one of the most revolutionary couturieres of her time.

To celebrate the 80th anniversary of Coco Chanel’s landmark Bijoux de Diamants col-

#36 Coco Chanel Iron Railing



**D**espite the compelling artwork and inviting furnishings that pepper Ben Soleimani's airy Los Angeles home, visitors might be forgiven for staring down at their feet.

After all, Soleimani is the scion of a Persian family that has been dealing in carpets for four generations. In fact, his father founded Mansour in London in 1980, selling palace-worthy weaves that have earned the company a Royal Warrant, making it an official purveyor to the British Royal Family. It's not an overstatement to say that Soleimani has access to some of the best rugs on the planet.

And here at his house in Beverly Hills, he has unrolled his personal treasures, carefully selected over the years. "I have always liked Zieglers, which are very hard to find now," he says, referring to the Persian carpets from the late 19th and early 20th centuries that were woven expressly for export to the West. "Their colors are soft—they melt into each other. You can use them with both antique and modern furniture, which works well for my place."

Indeed, in the bright living room just beyond the double-height foyer, an expansive coral-tone Ziegler Sultanabad pulls together all the elements—18th-century Chinese ceramics, Georgian-era English furniture, a Glenn Ligon conceptual painting, and a custom-made sofa—as if the rug had been crafted for this very space and context. "I always start decorating with the carpets first," Soleimani notes.

Soleimani has felt at home in L.A. since he arrived in the city at age 16. Coming from London, where he'd lived for a decade after his family left Iran in the late '70s, he was ready to put down roots. "I knew this was where I wanted to make my life," he says. In 1993 he opened Mansour's first U.S. store, on West Hollywood's fashionable Melrose Avenue, and it soon became a go-to place for designers looking for top-quality carpets from across the globe (he launched a second Mansour outpost last year, in San Francisco). In 2005 he started an offshoot called Mansour Modern, which offers striking collections of contemporary carpets. Soleimani serves as Mansour Modern's head designer, enlisting the talents of esteemed decorators Victoria Hagan, Kerry Joyce, and Michael S. Smith as well. He has also created a line of rugs for Restoration Hardware.

"When you grow up with nice carpets, you learn to treat them like works of art," Soleimani says. "It's important to find a space where you can show them properly." For him that space materialized a few years ago, when friends going through a divorce were selling a six-bedroom 1986 neo-Tudor mansion he had long admired. "I thought the scale and light of the house were wonderful," he

**Left, from top:** A portrait series by Andy Warhol, a painting by Mark Grotjahn, and a vintage Murano-glass chandelier brighten the foyer, where a custom-designed Fernandez table and a pair of 1930s metal stools rest on an antique Ziegler Sultanabad carpet from Mansour. Beneath an 18th-century English chandelier from Charles Edwards, Chippendale dining chairs encircle an 18th-century mahogany table; the artwork is by Rudolf Stingel. **Opposite, from top:** In the living room, the sofa and club chairs are by Waldo's Designs; the canvas above the fireplace is by Glenn Ligon, and the carpet is a Ziegler Sultanabad from Mansour. Vintage milk-glass lights are suspended over the kitchen's island, which is painted in Farrow & Ball's Claydon Blue; the dishwasher is by Miele.

# Discoveries

THE BEST IN DESIGN, CULTURE, AND STYLE

EXHIBITIONS

## FANTASTIC VOYAGE

Most honeymoons blend relaxation and romance. For American heiress Doris Duke, however, a 1935 globe-trotting trip with groom James H.R. Cromwell made a strong impression not only on her heart but also on her tastes. Brought face-to-face with the Islamic world, she began collecting everything from Persian tiles to Moorish furniture. That glittering haul forms the nucleus of Shangri La, her Moghul-meets-modern Honolulu estate, which was designed in 1937 by architect Marion Sims Wyeth (a terrace is shown). The oceanfront retreat, opened to the public in 2002, is now the subject of "Doris Duke's Shangri La," a traveling exhibition debuting at Manhattan's Museum of Arts and Design on September 7. As the show's companion book (Skira Rizzoli, \$55) proves, though the Duke-Cromwell match eventually fizzled, their travels led to a decorative match made in heaven. *madmuseum.org* —MITCHELL OWENS

#38 Opulent Terrace Railing

## ON THE MARKET

Extraordinary homes for sale around the world EDITED BY AMANDA FRIEDMAN



## Roquebrune-Cap-Martin, France

8 BEDROOMS  
6 BATHS  
9,200 SQ. FT.  
\$93 MILLION

**PEDIGREE:** This Belle Epoque mansion was built in 1908 by Danish architect Hans-Georg Tersling (best known for designing

the nearby Grand Hotel du Cap Martin, now closed). Named Les Rochers, the magnificent cliffside villa feels like a resort unto itself, thanks to its panoramic views of the Mediterranean Sea and Monaco in the distance.

**PROPERTY VALUES:** Upping the luxury quotient on this single-acre parcel are a swimming pool and formal terraced gardens, which descend to a private beach.

**TALKING POINT:** The current owners filled the home with Continental antiques, also up for sale.

**CONTACT:** Burger Sotheby's International Realty, 011-33-4-93-38-50-33

## Norwich, Vermont

**PEDIGREE:** Sitting at the heart of the impressive 121-acre Stonebridge horse farm is a meticulously renovated 19th-century Cape-style cottage with an expansive master bedroom wing. Charmingly rustic touches prevail throughout the house, among them wide-plank pine floors, Rumford fireplaces, and cherry cabinetry.

**PROPERTY VALUES:** Perennial gardens, maple trees, and sprawling pastures cover the rural terrain, which also includes two barns (one a classic four-story bank structure and the other party-ready with a sleeping loft). The three buildings all overlook a large swimming pond.

5 BEDROOMS  
3.5 BATHS  
3,400 SQ. FT.  
\$2.4 MILLION

**TALKING POINT:** Equestrians will marvel at the paddock, six-stall stable, and heated tack room.

**CONTACT:** LandVest, 617-359-5584



4 BEDROOMS  
5.5 BATHS  
8,000 SQ. FT.  
\$12 MILLION

## Los Angeles

**PEDIGREE:** In 1951 the California architecture firm Pereira & Luckman constructed Farralone, a glass-walled home in the San Fernando Valley, for bank heiress Dora Hutchinson.

**PROPERTY VALUES:** The five-and-a-half-acre estate features a guesthouse, a gym, and two pools and comes with an adjacent nine-and-a-half-acre lot (used as a vineyard).

**TALKING POINT:** Local legend has it Frank Sinatra rented the residence for nearly a decade.

**CONTACT:** Coldwell Banker Previews, 310-281-4558

View more prime properties online at [archdigest.com/go/estates](http://archdigest.com/go/estates)

Terrace Railing on A French Villa #39



#40 Chinese Stair Railing



Custom-made button-tufted velvet chairs are nestled under the pigeonier's windows, which are fitted with hand-painted shades. **Opposite:** Chinese ancestor portraits from the early 19th century line the curving staircase.



Chinese Overlook Railing #41



#42 Iron Fence thru Window

# CONQUER

With bespoke millwork and ennobling details, Houston decorator J. Randall Powers recasts a generic 1990s house as an ultra-refined, art-filled triumph

TEXT BY MITCHELL OWENS  
PHOTOGRAPHY BY ERIC PIASECKI  
PRODUCED BY ROBERT RUFINO



BEFORE



**Above:** At the Houston home of interior designer J. Randall Powers and investor William L. Caudell, custom-made moldings amplify the elegance of the entrance hall, which contains a Regency settee and a 1920s Navajo rug; the sconce is by Vaughan, and the umbrella stand is a Ming-dynasty sake jar. The art displayed along the stairway includes a colorful work on paper by Joan Mitchell. **Opposite:** Greek vessels top a limestone mantel in the sitting area off the kitchen; the armchair and bull's-eye mirror are by Rose Tarlow Melrose House, and the floor lamp and sconces are from Circa Lighting. For details see Sources.

Ovals & Pickets w Knuckles #43

# SHOPAD.net

## BELGARD PLANNING YOUR OUTDOOR SPACE

On ShopAD.net you will find a slew of products that can help you with planning your outdoor space—a needed distraction from the cold days of winter. Now is the time to anticipate the warm spring temperatures and ready your outdoor living area for entertaining. A few things to consider when conceptualizing your space:

**Let architecture guide you.** Outdoor living spaces are a continuation of the home. Work with the home's architecture, thoughtfully incorporating accents and angles into the design.

**Allow for breathing room.** When deciding on the size of your outdoor area, consider the space you'll need around the furniture. Cocktail parties have different spatial needs than seated dinners.

**Consider the axis.** Design areas of interest off axis points. Stand at the back door imagining the space like a wheel, with the spokes as sight lines. These lines should guide eyes to a beautiful garden, water or fire feature, or seating area.

With the architectural design elements in place, you can consider paver colors, patterns, and textures that complement the home and suit your style. Visit [belgard.biz/outdoorspace](http://belgard.biz/outdoorspace) to find design resources or to request a complimentary idea book.

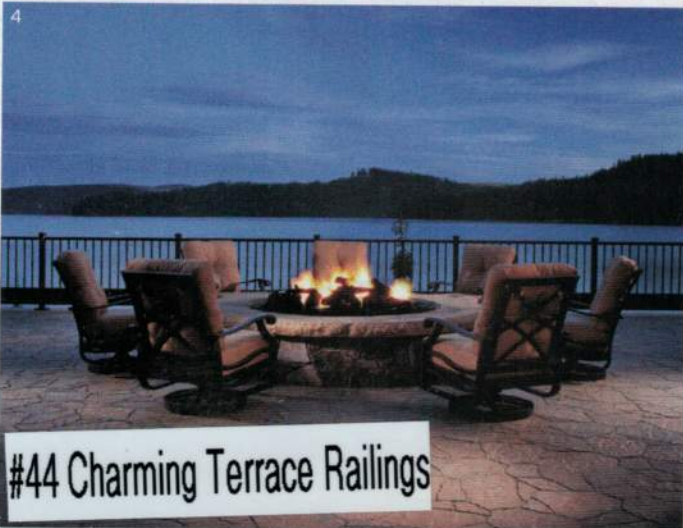
[1] Modular pieces from the Elements collection reduce installation time for a beautiful space.

[2] Urbana pavers and a Weston wall make for the perfect patio and outdoor kitchen.

[3] Urbana pavers and an outdoor kitchen create a space that can be used year-round.

[4] Mega Arbel pavers set the scene for an evening around the fire pit.

[5] Dublin Cobble pavers and a Celtic wall create an expansive outdoor space.



VIEW THESE AND OTHER PRODUCTS AT [SHOPAD.NET](http://SHOPAD.NET)



Designer Francis Sultana and architect Thomas Croft renovated a triplex apartment in a 19th-century London mansion for its art-collecting owner and her family. In the drawing room, a Steinway piano is positioned between a light sculpture by Elizabeth Garouste and Mattia Bonetti and a cabinet by Bonetti. Over the cabinet hangs a sculpture by Thomas Houseago, while a painting by Keith Coventry is displayed above a Martin Szekely console nearby. The clear cylindrical side table is also by Szekely, and the crocodile stool is by Claude Lalanne. For details see Sources.

Elaborate Cast Iron Railing #45



The double-height entrance hall is splendidly austere, with an Hervé Van der Straeten pendant light from Ralph Pucci International, an antiqued-brass-and-silver railing, and gray onyx floors providing major drama. The photograph *Black Pulse 6* by Doug and Mike Starn rests on an Ingrid Donat commode; a bench covered in a platinum leather by Holly Hunt shimmers along one wall.

#46 Geometric Stainless Railing

# A late-Georgian stucco mansion is not an obvious home for a collection of cutting-edge art

and design—but this London residence comes with a historic connection to the avant-garde. In 1913, at the same address, leading society hostess Lady Hamilton created a showcase for the Bloomsbury Group's newly established design collective, the Omega Workshops (the critic Roger Fry advised her on the decor, and Virginia Woolf's sister Vanessa Bell was among the contributing artists). So it is entirely appropriate that, a century later, the property's present owner—a Hong Kong-based art collector with strong ties to several European museums and galleries—has reintroduced a forward-thinking aesthetic to the place, this time with a wide-ranging international selection of pieces by designers like Mattia Bonetti and Martin Szekely and such artists as Adam Fuss, Gabriel Kuri, Fiona Rae, Anselm Reyle, and Keith Tyson.

What principally attracted the collector to the building was, she recalls, "the rarity of the dimensions, and the unexpectedness." A peculiarity of the five-story mansion and its neighbors along the block, all built in the 1830s, is that their grander sides face the garden, rather than the street. "It's very historic and unique," she says.

The sizable apartment she occupies with her husband and two small children takes up the house's three lowest levels. The first and second floors are grand in scale, their elaborately corniced ceilings rising to heights of 13 feet or more, while the garden level's ceilings extend to 12 feet. This presented designer Francis Sultana and architect Thomas Croft, both based in London, with a problem and an opportunity. Though ideal for entertaining and displaying works of art, the vast rooms weren't obviously suited to a young family, and historic-preservation regulations stipulated that the spaces couldn't be fully partitioned to give them more intimate proportions. The challenge, the owner says, was "to create a home, not a museum."

Sultana and Croft (who has worked for minimalist architect John Pawson) have collaborated on several projects, despite possessing rather divergent sensibilities. "Whatever I choose in terms of furniture and decoration is quite strong," explains Sultana, "whereas Tom is the total opposite." The owner also took an active role, and in the end a harmonious triumvirate was established. "Francis was quite maximal, Thomas was very minimal, and I was in the middle," says the owner. "But they were both very thoughtful about not imposing their visions." (Lighting designer Sally Storey of John Cullen Lighting also helped humanize the building's scale.)

The entrance opens onto the apartment's most impressive space: a cavernous, irregularly shaped drawing room with a grand stairway rising to the second floor. Large enough to hold 200 people, this area was used by the former occupants to host lectures and discussions—a tradition the new owner has continued. But now, thanks to the careful deployment of striking artworks and opulent furnishings,



**Above:** The white stucco exterior of the late-Georgian residence.

**Opposite, from top:** At one end of the drawing room, a Jean Royère sofa is grouped with Bonetti polished-steel side tables and a Charlotte Perriand bench with a cushion covered in an Edelman Leather cowhide; the large framed painting near the window is by Anselm Reyle, the photograph on the mantel is a piece by Marlo Pascual, and the pair of table lamps is by Garouste and Bonetti. A sinuous mirrored table by Ron Arad separates twin sofas designed by Sultana; the white geometric side table is by Bonetti, and the carpet is by Fort Street Studio.

Classic Aluminum Fence #47



## RIVERVIEW MANOR

Commanding five acres along the banks of the Potomac River, this magnificent estate affords gracious living in a highly sought-after suburb near Washington, D.C. Presiding on one of the most picturesque riverfront settings in the region, the home boasts unrivaled river vistas with a tranquil ambience that enwraps the private residence. Despite its ideal sense of seclusion, the captivating property is also convenient to the nation's capital and Reagan National and Dulles International airports, making commuting and travel easy.

### GRAND IMPRESSIONS

Through the gated entry, the approach to the columned portico reveals the grandeur of this captivating residence. The gleaming marble foyer sets an elegant tone with a sweeping curved staircase, a soaring ceiling with paired chandeliers, multiple sconces, cove lighting, magnificent arches, pilasters, and deep triglyph cornice moldings. The grandeur of the great room begins with the triple-arched entrance and is enhanced with two-story soaring arched windows accentuating the unparalleled all-season views of the Potomac River. Attention to detail is evident in the gold-leaf coffered ceiling, multi-dimensional millwork of the mantle with medallion focal point and the elegant moldings. The magnificent fireplace with onyx surround tempers elegance with warmth. Fit for entertaining dignitaries, the living and dining

**#48 Upscale Estate Gate** cate plaster ceiling designs, richly-  
t custom millwork accenting the







## NIROO MANSIONS' MASTERPIECE

Potomac. This incredible custom masterpiece built by premier builder David Niroo and internationally-acclaimed Haleh Design is located in the prestigious Falconhurst community and only minutes from Potomac Village, downtown Washington, D.C., and three major airports. The exquisite limestone elevation with a European villa design features materials, finishes and workmanship reserved for the world's most elite homes. Imported exotic stone, crystal fixtures, custom plasterwork, a gourmet Habersham kitchen, a stunning Italian, fully in-laid paneled library, a spectacular home theatre, and a heated pool complement the unparalleled architecture in this rare find. Offered at \$6,900,000.

Marc Fleisher 301.961.3180 • fleishermarc@aol.com  
 Friendship Heights Office 202.364.5200, Ext. 2927

Estimated property taxes and non-tax charges in the first full fiscal year of ownership are \$52,500.





### FALCONHURST MASTERPIECE

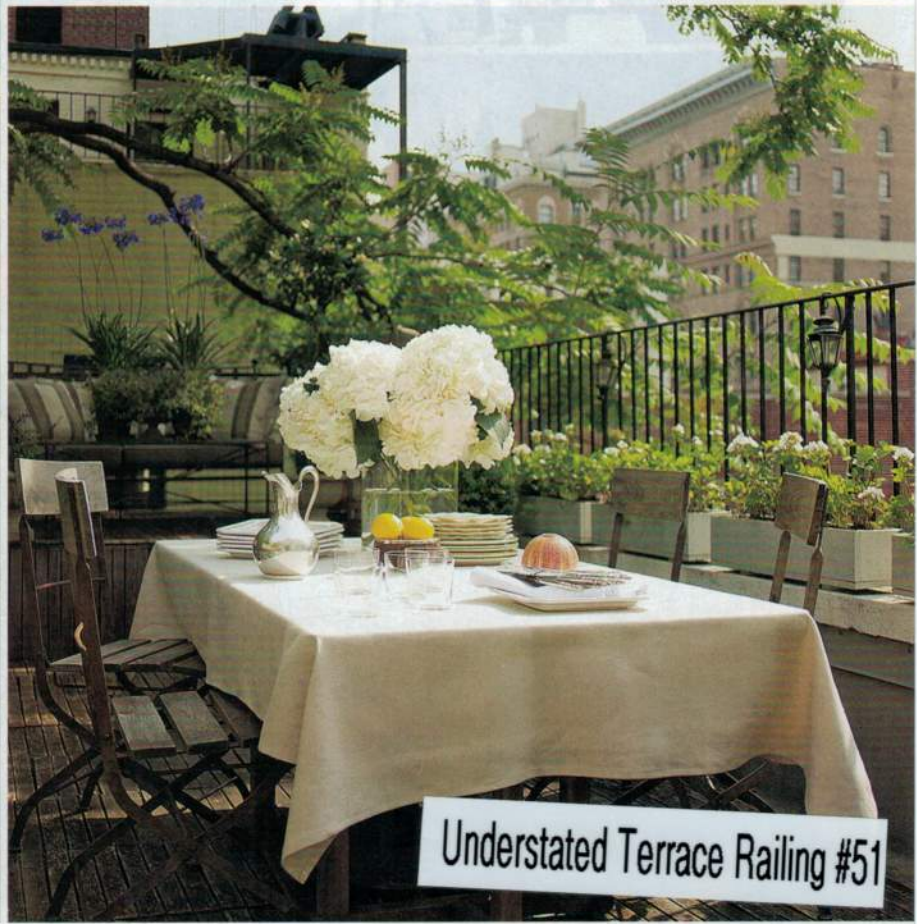
Potomac. This custom masterpiece constructed by acclaimed Niroomansions combines elements of European and American architecture and offers the finest materials with expert workmanship. The traditional floor plan features embassy-sized rooms, a dramatic foyer with a barreled ceiling, an adjoining atrium with a bifurcated marble staircase, a fabulous grand salon with a two-story tray ceiling, and an outstanding gourmet kitchen with a center island. The lower level is enhanced by a home theater, a spacious game room, and a guest suite. The large terrace adjoins the main level, while the home is sited on an exquisite two-acre lot. Offered at \$3,995,000.

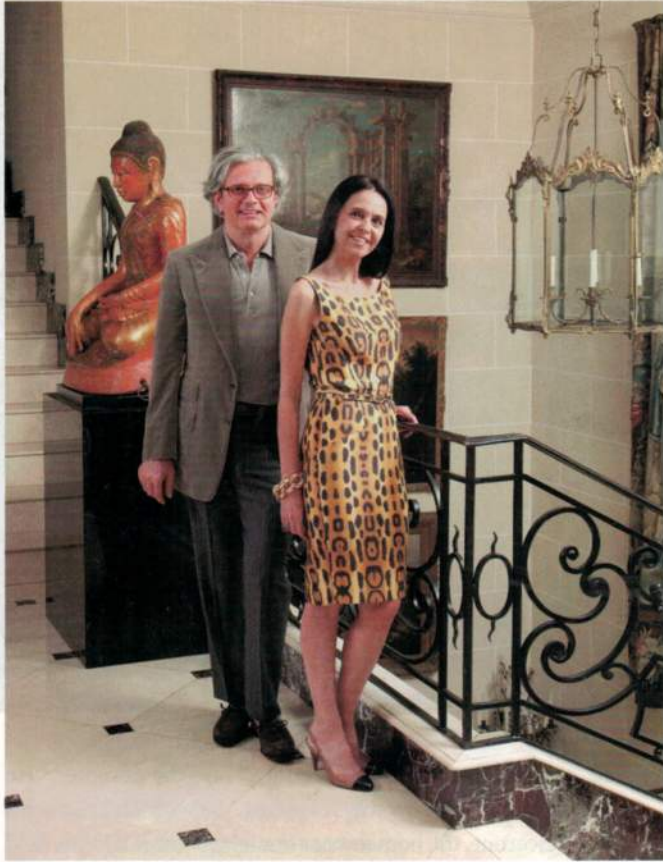
Marc Fleisher 301.961.3180 • fleishermarc@aol.com  
Friendship Heights Office 202.364.5200, Ext. 2927

Estimated property taxes and non-tax charges in the first full fiscal year of ownership are \$42,335.



#50 Iron Railing w Bronze Caprail





# TROPICAL BAROQUE

In his neoclassical-style mansion in the heart of São Paulo, architect Jorge Elias flamboyantly blends equal parts grand antiques and bold contemporary art

TEXT BY RAUL BARRENECHE PHOTOGRAPHY BY ROGER DAVIES  
PRODUCED BY CARLOS MOTA



#52 Impeccable Stair Railing



### AVENEL'S EAGLE RIDGE

Bethesda. Presiding on a breathtaking 2.5-acre lot, this custom masterpiece built by and for its award-winning builder is unparalleled in its use of the finest materials and expert workmanship. A timeless architectural design with European villa influences is enhanced by historic elements and modern amenities. From the extraordinary great room with a two-story open, beamed ceiling, to the sensational gourmet kitchen with a complex ceiling design and unique center island, to the incredible library featuring 18<sup>th</sup>-century imported paneled walls, no detail has been overlooked. The private, cul-de-sac location features a secluded pool and a sports court. Offered at \$7,250,000.

Marc Fleisher 301.961.3180 • fleishermarc@aol.com  
 Friendship Heights Office 202.364.5200, Ext. 2927

Estimated property taxes and non-tax charges in the first full fiscal year of ownership are \$22,083.



Sensational Pool Deck Railings #53



## Tournament Hills

Depart from the ordinary and enter a realm of tradition and balance, where the refinement and serenity nourishes and replenishes your soul. Passing through the massive entry doors starts a journey from the demanding modern world into an aura of tranquility that belongs to another time yet fits right in place for you here and now. 15,479 square feet of luxury living adorned with unsurpassed custom vignettes, ornate chandeliers and sconces. Features include a two-story entry foyer, living and dining rooms, chess room, billiards room, gourmet kitchen with butler's pantry, theater, elevator, and an even more incredible grand master suite with two complete separate bathrooms and massive closets, including large terraces overlooking the TPC golf course and backyard paradise. T:846657

Offered at \$7,500,000

#54 Vibrant Aluminum Railings

 **Prudential**  
Americana Group.  
REALTORS®



Shapiro & Sher  
GROUP  
702.315.0223

[www.LasVegasFineHomes.com](http://www.LasVegasFineHomes.com)

[Distinctively Arcways]

**Built for you. Built for forever.**



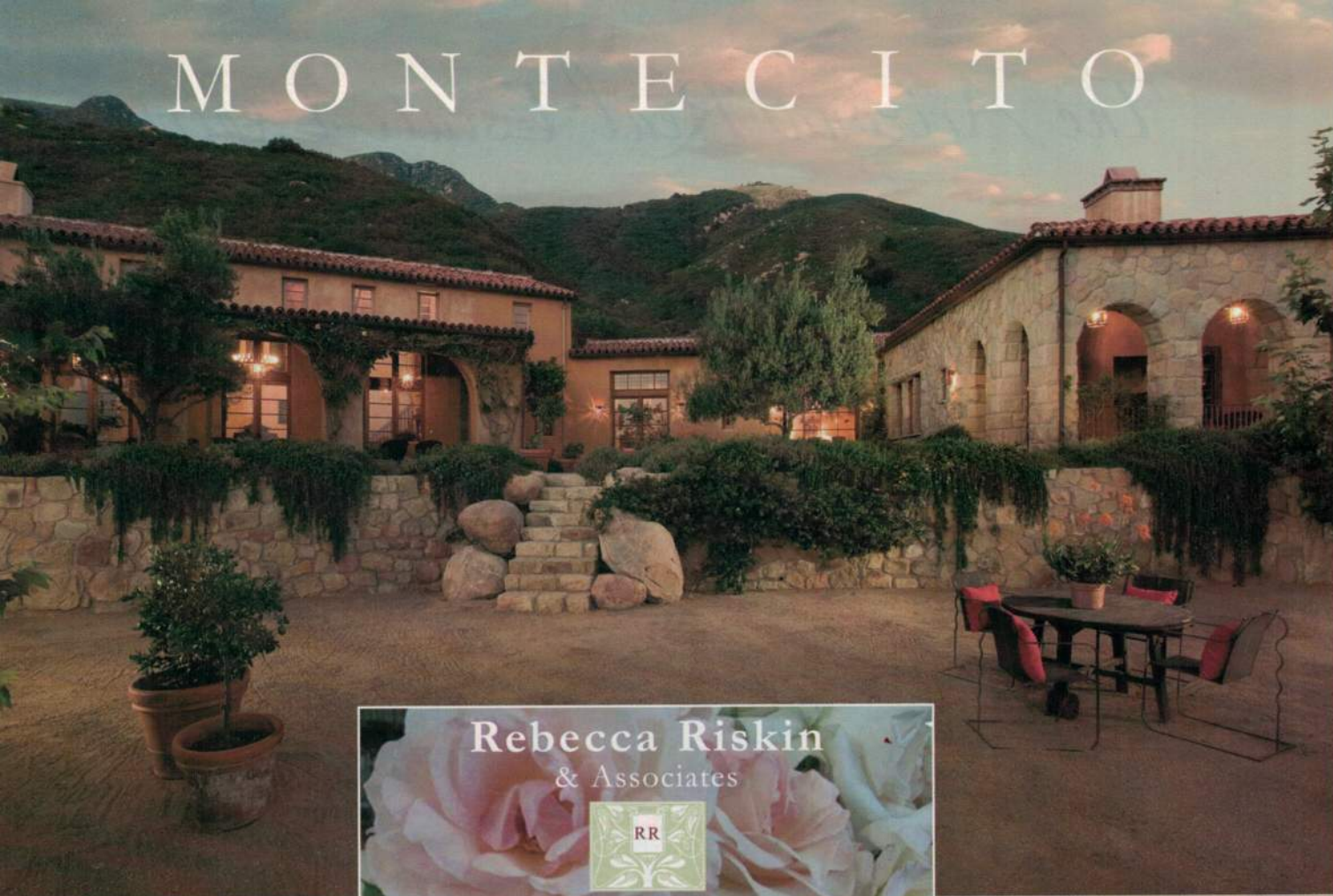
Every Arcways stairway is unique—each perfectly built to exacting standards for the most exceptional homes in the world. With superb craftsmanship and impeccable materials, stairways that stand the test of time. When is essential, Arcways is the choice. View our gallery or make an inquiry at [www.arcways.com](http://www.arcways.com).

**Intricate Foyer Railings #55**

AWI

**ARCWAYS**  
STAIRWAYS OF DISTINCTION

# MONTECITO

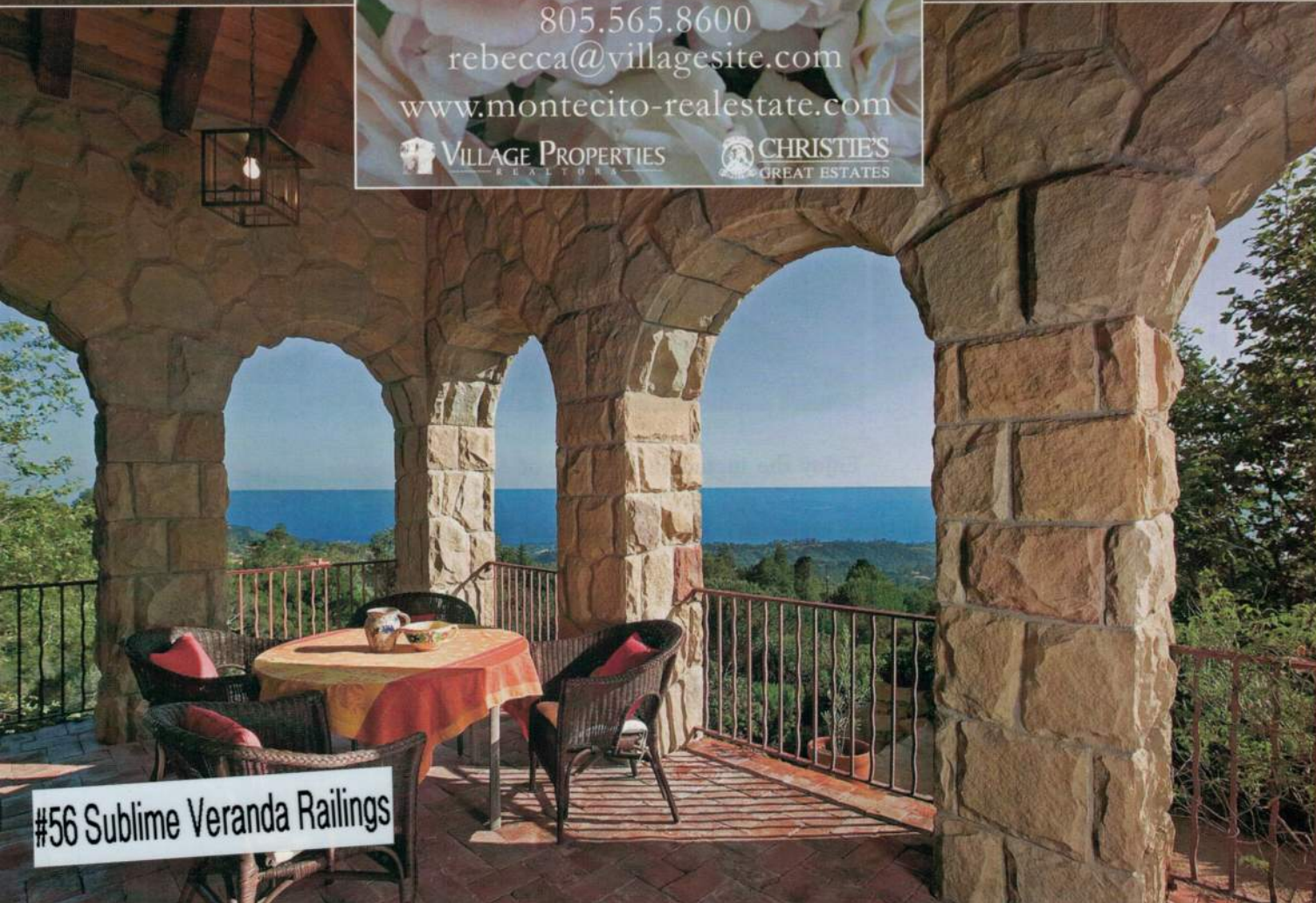


Rebecca Riskin  
& Associates



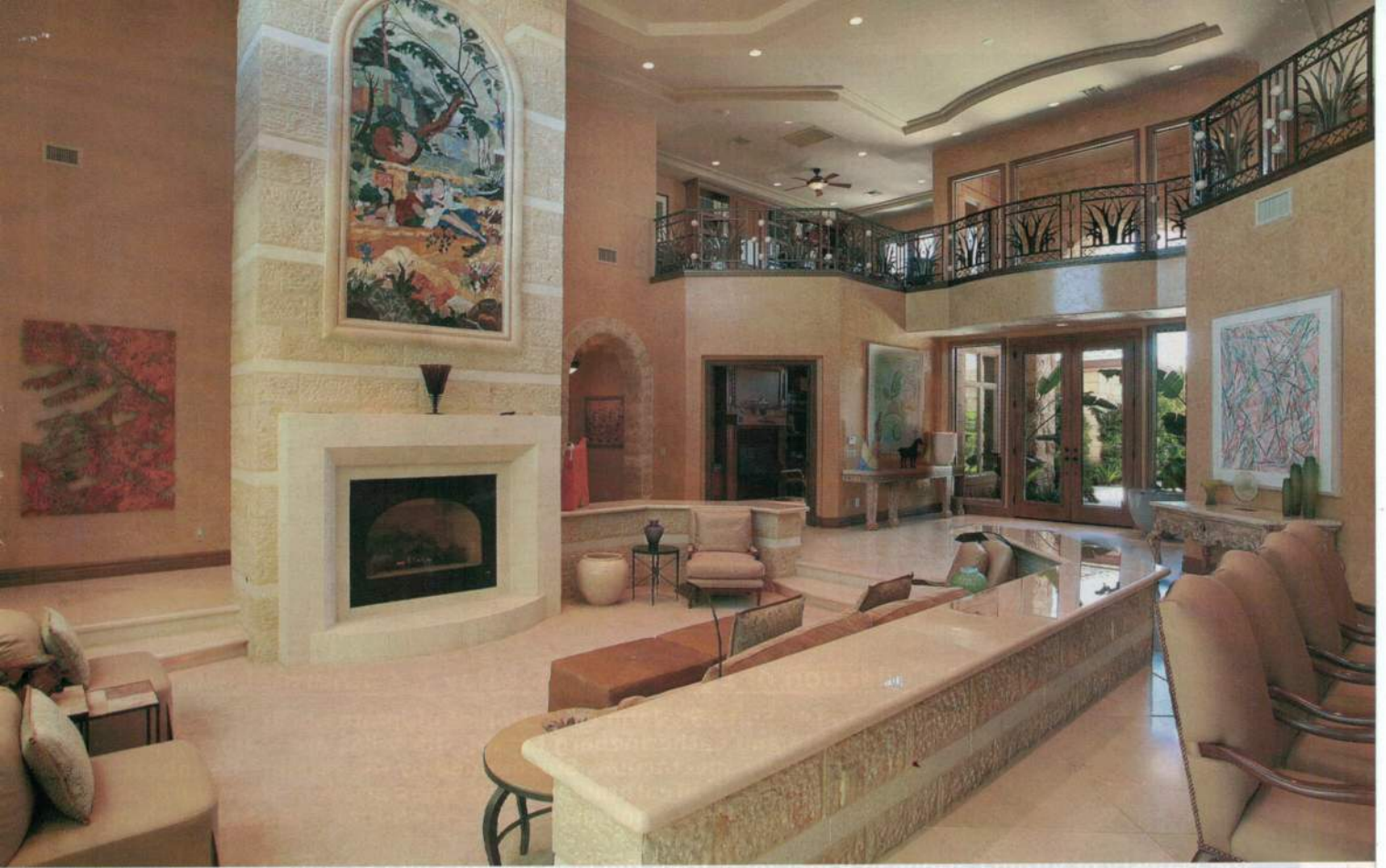
805.565.8600  
rebecca@villagesite.com  
www.montecito-realestate.com

 VILLAGE PROPERTIES  
 CHRISTIE'S  
GREAT ESTATES



#56 Sublime Veranda Railings





## Queensridge

A unique combination of elements...quiet, private and spacious with spectacular views. An incomparable 9418 square foot estate blending old world charm with contemporary Mediterranean architecture. Features include Badlands golf course frontage, five bedroom suites, grand living and dining room areas, chef's kitchen, large family room, two offices, theater room, lanai with beautiful plants and glass sliders that open the room to the backyard. The grounds are impeccable, yet relaxing with two covered patio areas, sparkling pool and spa, barbeque station, sunken cabana sitting area, fire pit and spectacular views of golf course and mountains.  
T:833335

Offered at \$7,000,000

Nature-Inspired Forged Railings #57



Shapiro & Sher  
GROUP  
702.315.0223

[www.LasVegasFineHomes.com](http://www.LasVegasFineHomes.com)



#58 Curvy Balcony Railing

Shapiro conceived the master bath so that the minimalist tub has views of the garden and the Malibu hills. OPPOSITE: A 19th-century Uzbek suzani covers Shapiro's bed; the 17th-century Italian Savonarola chair stands alongside an antique Burgundian roof corbel.

The living room's center window is dressed in swagged curtains of a Robert Kime printed linen; the chandelier is Continental, and the banquettes were custom made. The 19th-century Amritsar carpet is from J. Iloulian.



Dramatic Balcony Railings #59

A starburst granite-and-marble floor punctuates the entrance hall of *El Sueño*, entrepreneur Michael Rosenfeld's Los Angeles house, designed by architect Kevin A. Clark and decorated by Madeline Stuart. The artwork is *Landscape No. 556* (1998) by John Virtue, the Italian walnut stool is from Paul Ferrante, and the commode is 17th century; the walls are done in Pointing paint by Farrow & Ball. **OPPOSITE:** An 18th-century silver-gilt mirror hangs above a circa-1830 Italian console in the dining room. For details see Sources.



#60 Textured Iron Railing



CLOCKWISE FROM TOP LEFT: Cy Twombly paintings at Gagosian. Yabu Pushelberg's redesigned gallery of Printemps department store, on boulevard Haussmann. A 1918 Gerrit Rietveld chair. The Shangri-La hotel.

in multiple monumental mirrors; the two restaurants, La Cuisine and Il Carpaccio, are already drawing raves. Other attractions: a spa, pool, garden, private cinema, mobile recording studio, art concierge, and bookshop.

If Starck isn't your man, then the Paris Shangri-La ([shangri-la.com](http://shangri-la.com); 011-33-1-53-67-19-98) is a quieter alternative. The hotel opened last month in the renovated former mansion of Prince Roland Bonaparte, Napoléon's grandnephew. Designer Pierre-Yves Rochon has conserved the private townhouse spirit of this 1896 building in the silk-stocking 16th arrondissement, installing Empire-inspired furnishings in the 81 rooms. The most spectacular is the Panoramic suite, which has an eye-popping

view from its private terrace. In the bar, a trellised wall pays tribute to Elsie de Wolfe, a.k.a. Lady Mendl, another former resident of the mansion.

The trend in Paris dining for 2011 seems to be "back to basics." The new Essentiel menu at Alain Ducasse au Plaza Athénée ([plaza-athenee-paris.com](http://plaza-athenee-paris.com); 011-33-1-53-67-65-00) puts a de-emphasis on ingredients in such dishes as a vegetable-and-fry starter (a mix of celery, beet, turnip, and grated apple); an entree of sole with a marmalade of cèpe mushrooms; and a dessert that conjugates hazelnuts into soufflé, ice cream, and cake.

Celebrated American chef Daniel Rose has Paris gourmets on a long waiting list for a table at his recently relocated Spé bistro ([springparis.fr](http://springparis.fr); 011-33-1-45-96-05-72), now near Louvre. Buvette, a new bar in the stone-vaulted cellar, offers a large selection of wines by the glass, along with hams, saucis, foie gras, artisanal cheeses, and a taste of Rose's cooking: day's *tourte*, a savory country pie.

What to see after a second espresso? These three exhibit top the list. "Basquiat" is on view at Musée d'Art Mo



In the foyer of Steven and Claire Stull's Napa Valley home, Richard Beard of B.A.R. Architects created the stair using balusters by Rocky Mountain Hardware. The credenza, in the style of Jules Leleu, is from Guy Regal. For details see Sources.



#62 Bronze Belly Pickets on Radial Stair

# Point of View

B.A.R. Architects and the Wiseman Group collaborate on a hilltop home in Napa wine country

TEXT BY CAROL MITHERS | PHOTOGRAPHY BY MATTHEW MILLMAN



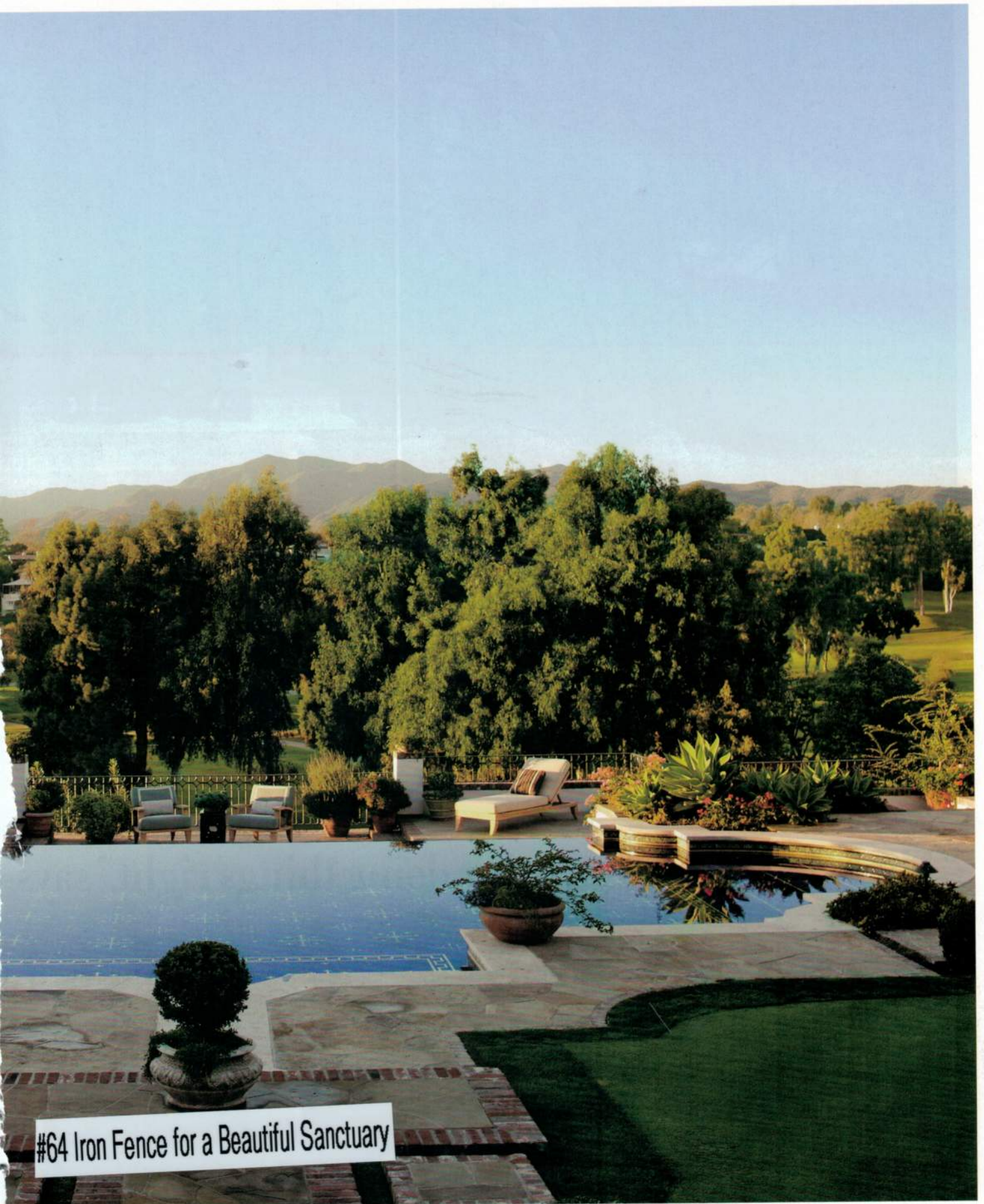
# MONTECITO

*properties of distinction.*

Expertly Forged Iron Railing #63

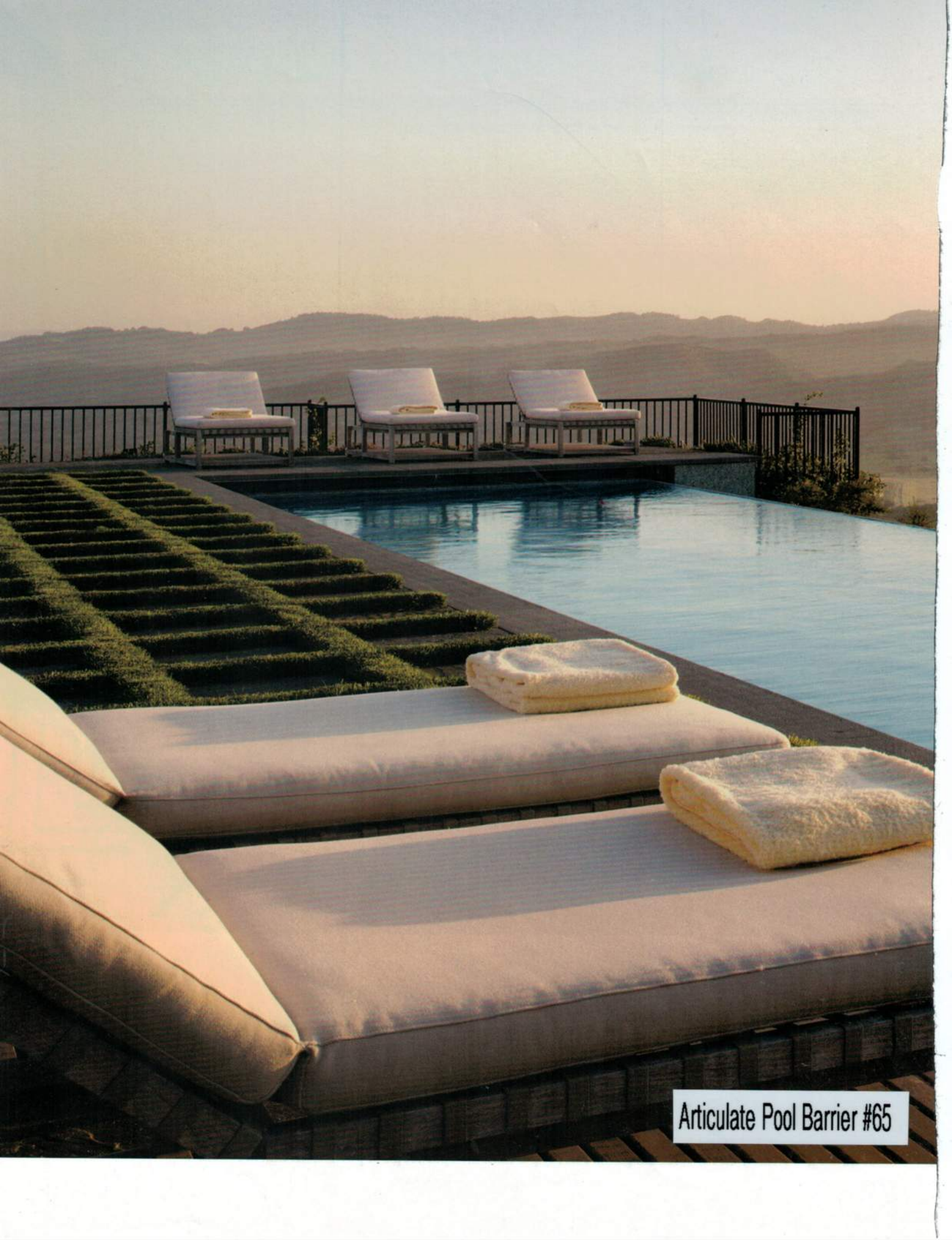
**Robb Report Exceptional Properties**

rebecca@villagesite.com 805.565.8600 #1 agent in Santa Barbara.  
www.Montecito-RealEstate.com

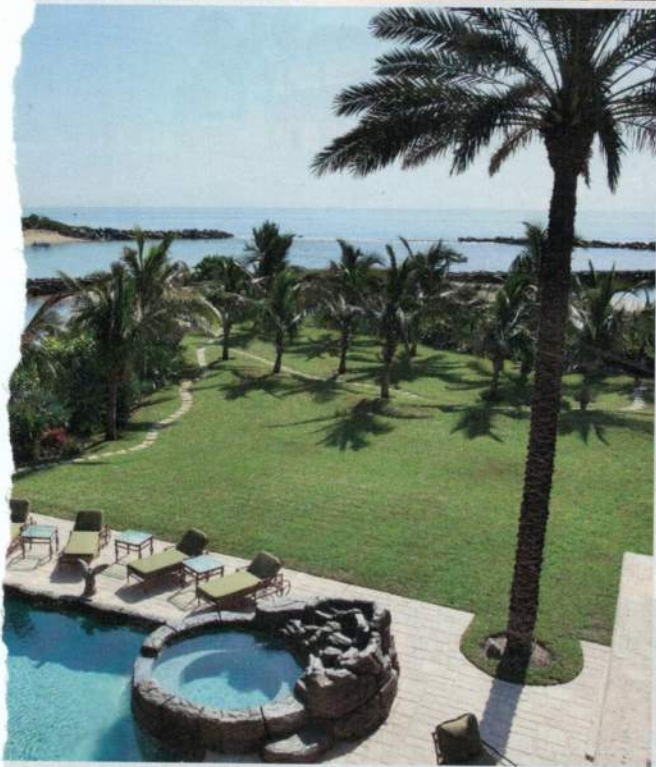


#64 Iron Fence for a Beautiful Sanctuary





Articulate Pool Barrier #65



## WILLSBORO SHORES OCEANFRONT ESTATE - POMPANO BEACH, FL

Spanning over a seaside dreamscape of .64±-acre this point estate spans 128± feet of ocean beachfront. Showcasing magnificent craftsmanship, this residence totals 10,680± square feet with 5 bedrooms, 6.5 bathrooms and air-conditioned 4-bay garage.

An immediate panoramic ocean, inlet and lighthouse vista unfolds in the grand 2 story living room with French doors that open onto the oceanfront terrace, while an ornate gas fireplace and Jerusalem stone accents add to the room's impressive elegance. The family room features a custom entertainment center, ornate plasterwork ceiling, and "fog-effect" glass floor panels over the pool bar below. The gourmet kitchen features granite counters, French limestone-topped island, professional series appliances, butler's pantry and adjacent wine room. Completing this level is the richly carved mahogany library with onyx-faced fireplace, stained glass windows, built-in flat-screen television, and executive desk.

The oceanfront master suite features a sitting area, drop-down plasma television, and private view balcony with a roof-top observation deck. Two customized wardrobe rooms accompany the his-and-her marble and granite bath with 24-karat gold and crystal Phylrich fixtures, 2 multi-spray steam showers, and jetted tub. In the opposite wing, 2 suites include an oceanfront suite with custom frescoes and wraparound balcony. This is one-of-a-kind, must-see, point estate.

- Oceanfront entertaining centers on stunning pool & spa with architectural poolside loggia
- Swim-up bar with in-water seating, waterfall, & kitchen
- Carved millwork, faux painting, custom ceilings & intricate ironwork
- Smart-house electronics
- 7-seat theater room with wet bar and billiard area
- Fitness Gym
- Full cabana bath
- Laundry room/kitchenette, storage, and staff suite

OFFERED FULLY FURNISHED:  
**\$9,995,000**

### #66 Forged Aluminum Railing



**CHAD FAULKNER**  
**ESTATE SPECIALIST**  
**Direct: 954.449.7878**  
**Office: 954.525.0018**  
**MLS Reference # F1092982**  
**www.2306BayDrive.com**



WORLDWIDE AFFILIATES  
**CHRISTIE'S GREAT ESTATES®**  
 Luxury Portfolio  
 Board Of Regents  
 Mayfair International Realty  
 Who's Who In Luxury Real Estate  
 FIABCI International Real Estate Federation  
 Leading Real Estate Companies Of The World

2424 East Las Olas Blvd., Fort Lauderdale, FL 33301



cosmati mosaics by Michael S Smith


SHOULDN'T ALL ROOMS BE LIVING?

**ANN SACKS**

annsacks.com  
1.800.969.5217



Antique Cast Iron Railing #67

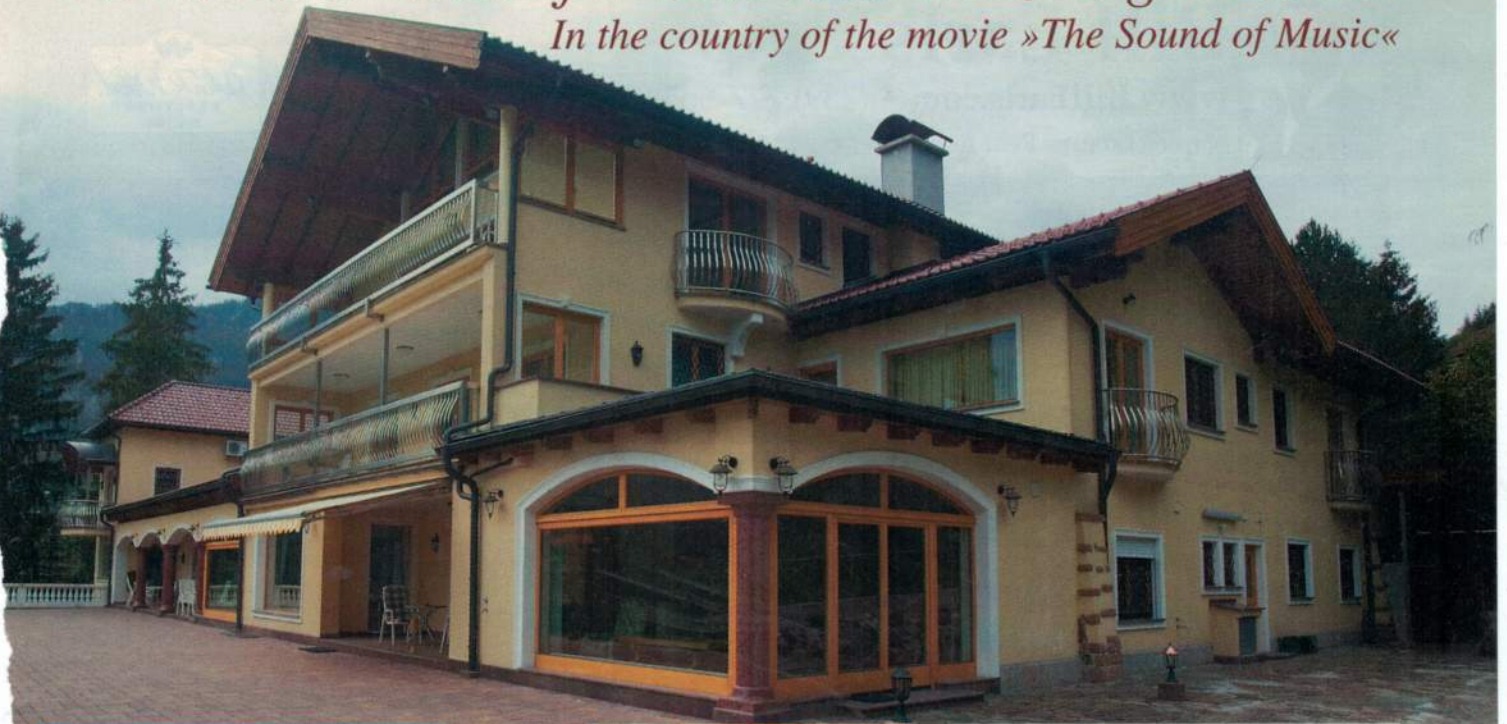


Architect Krsto Stamatovski stayed true to the simplistic lines of an Italian villa. Sloped rooflines are reminiscent of a hillside, while the symmetry of arches and columns lend a classic, balanced feel.

#68 Forged Aluminum Belly Railing

# Prime Real Estate for Sale near Salzburg / Austria

In the country of the movie »The Sound of Music«



Great value was placed on safe, extra strong and long lasting construction, using only the best quality materials sourced from all over the world. Generally, the building is built like »Fort Knox« and is meant to last for ever. 18.5 miles from Mozart City »Salzburg«. Many world famous ski resorts can be reached within a short time. Some scenes from the famous movie »The Sound of Music« were filmed a mere 100 yds from the mansion.

**Location:** Situated on a slight slope overlooking the near lake and mountains, hidden from view, full day sun exposure.

**Description:** Large mansion / the style of a modern castle, completed to highest comfort and technical standards. All rooms have lake and mountain panorama views.

**Built up area:** Approx. 18,300 sq ft, spacious, solid and elegant design. Extensive wellness, fitness and entertainment areas, huge master bedroom suite, five bedrooms with bathrooms, gourmet kitchen, large dining room, large lounge, grand ballroom, library, large staff / visitors' flat, 3 garages, exotic timbers, marble and granit finishes throughout.

**Land area:** approx. 11,960 sq yds, security fenced, parkland type development, 40 x 20 ft pool, very large car parks, very large entertainment terraces, outdoor barbecues.

**Price:** € 25,000,000  
(Approx. US \$ 32,000,000 depending upon exchange rate at date of settlement).

**Detailed Information:** Brochures which also include all necessary technical details and a comprehensive photo documentation book are available upon request.

**Owner / Vendor:** Günter H. Trnka

Phone: +43 (0) 6227/23 23

Fax: +43 (0) 6227/77 16

Mobile: +43 (0) 676/49 30 308

E-mail: [luxury.residence@trnka100.com](mailto:luxury.residence@trnka100.com)

Web: [www.trnka100.com](http://www.trnka100.com)

Further contact details – Australia:

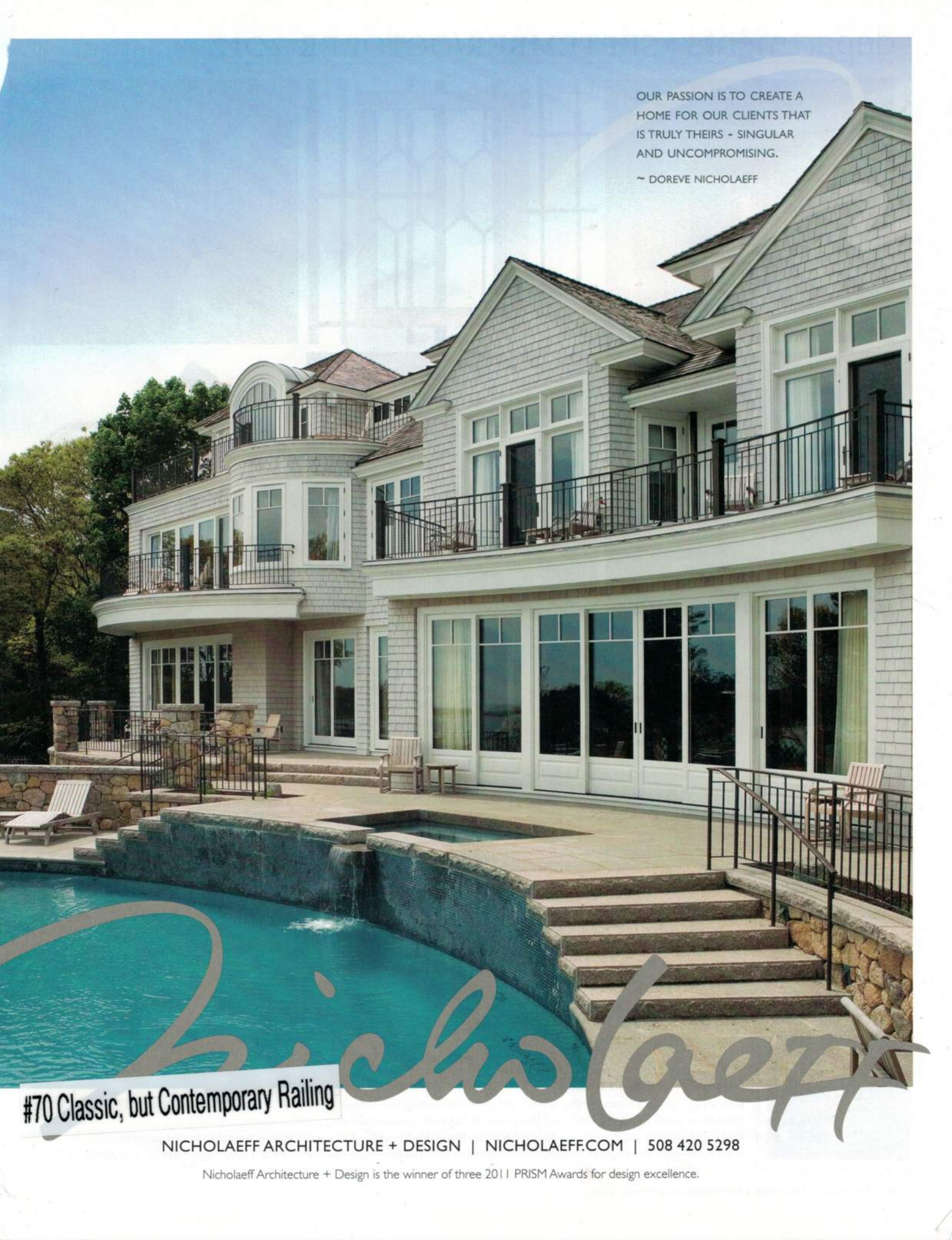
Phone: +61 (0) 8-8983 3688

Fax: +61 (0) 8-8983 3699

**Exceptional Terrace Railings #69**

OUR PASSION IS TO CREATE A  
HOME FOR OUR CLIENTS THAT  
IS TRULY THEIRS - SINGULAR  
AND UNCOMPROMISING.

~ DOREVE NICHOLAEFF



#70 Classic, but Contemporary Railing

NICHOLAEFF ARCHITECTURE + DESIGN | NICHOLAEFF.COM | 508 420 5298

Nicholaeff Architecture + Design is the winner of three 2011 PRISM Awards for design excellence.

# On Diamond Head

A CONTEMPORARY CLIFFSIDE DWELLING  
ON OAHU IS AT ONCE INTIMATE AND SERENE

Architecture by Donald Botsai | Interior Design by Jacques Saint Dizier, ASID  
Text by Jeff Turrentine | Photography by Mary E. Nichols



Alluring Terrace Railing #71

Contemporary Interiors



Photography: Debra Llwellyn

THE  
**TAYLOR & TAYLOR**  
PARTNERSHIP

ARCHITECTURE & INTERIOR DESIGN

CREATING AWARD WINNING HOMES IN THE LEADING COMMUNITIES  
OF FLORIDA THE CARIBBEAN AND THE NORTHEAST

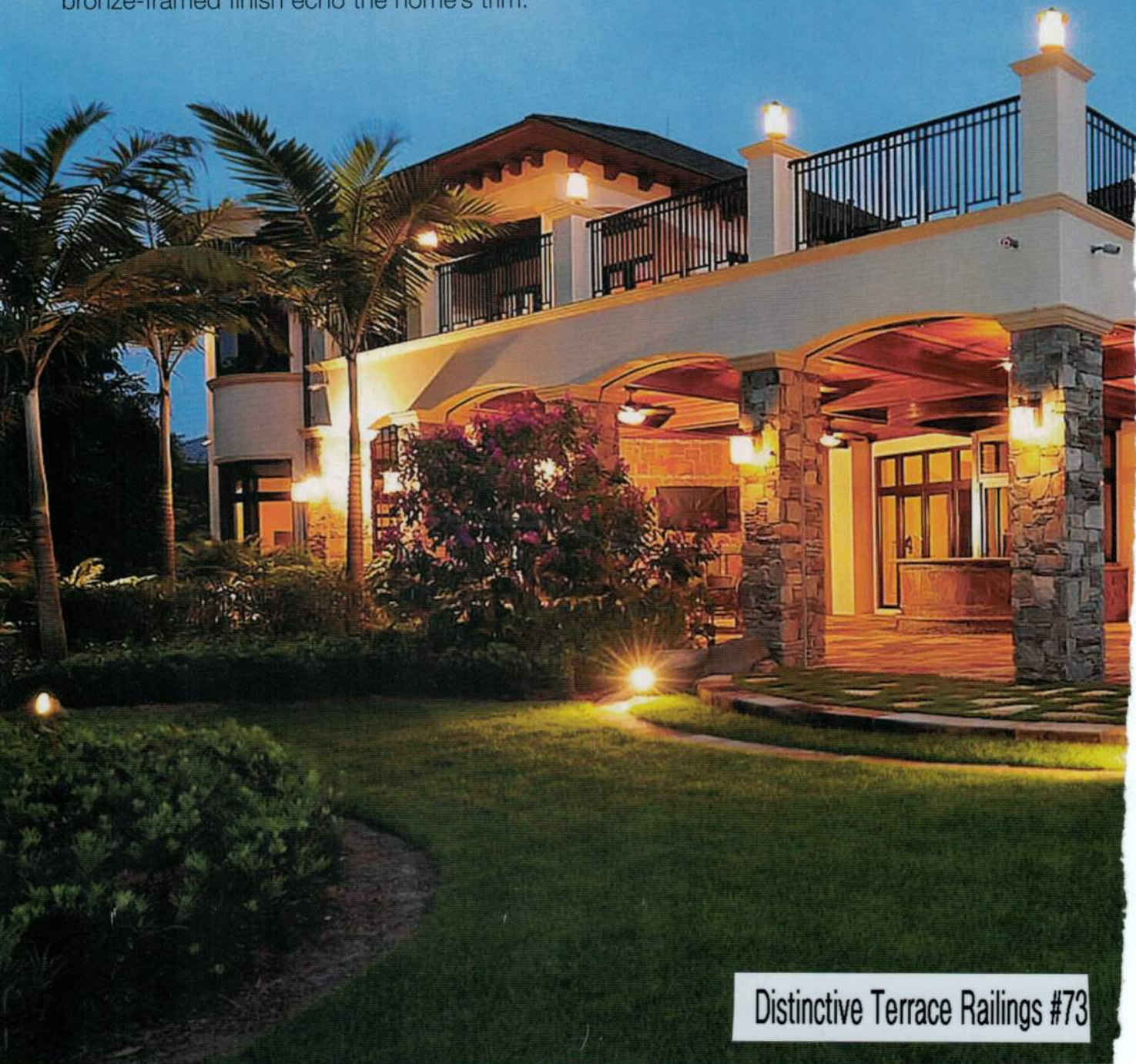
*Fisher Island, Hobe Sound, Isleworth, Key West, Lighthouse Point,  
Lyford Cay, Manhattan, Mamaroneck, Marathon, Miami Beach,  
Ocean Reef, Palm Beach, Singer Island, Sunset Key, Tampa,  
Windmill Ranch Estates, Rio Vista, Naples*

**#72 Elliptical Railing w Bronze Accents**

1211 Alton Road, Miami Beach, FL 33139  
PHONE 305 534.9862, FAX 305 534.1582  
www.taylorntaylor.com  
State License #8260



The rear exterior features Ledgestone columns with hidden tracks between the stone that hold phantom screens that descend mechanically. A meticulously crafted slate roof highlights hand-forged copper detailing. Brown Jordan furnishings in a bronze-framed finish echo the home's trim.



### Distinctive Terrace Railings #73

lounge chairs covered in brushed chenille with hand-loomed silk cushion fabric, all grouped around an oversized, chocolate-toned leather ottoman with hand-embroidered detailing.

Space for entertaining continues in the adjacent dining room, where dual dining groupings accommodate both small and large parties. "The wife fell in love with these trestle-based tables, and their slightly rustic feel is a great counterpoint to the refined dining chairs," Shuster says.

A bit more casual, the sunny breakfast area features custom banquettes upholstered in linen and suede that wrap around a table made of honey-toned milpa wood. Above, a dramatic domed ceiling with spoke wagon-wheel woodworking echoes the room's circular motif.



**Sotheby's**  
INTERNATIONAL REALTY

*Search for the Unique*

#74 Prestigious Terrace Railings

[sir.com](http://sir.com)

"We adore finding the perfect details to punctuate a space," Rogers-Bolton says. In the grand hall, a crystal border at the foot of white sheers captures the essence of the flooring's NeoClassic look. With nods to the ancient world, the chandeliers from the Paragon Collection add a contemporary twist.



Unique Stair Railings #75