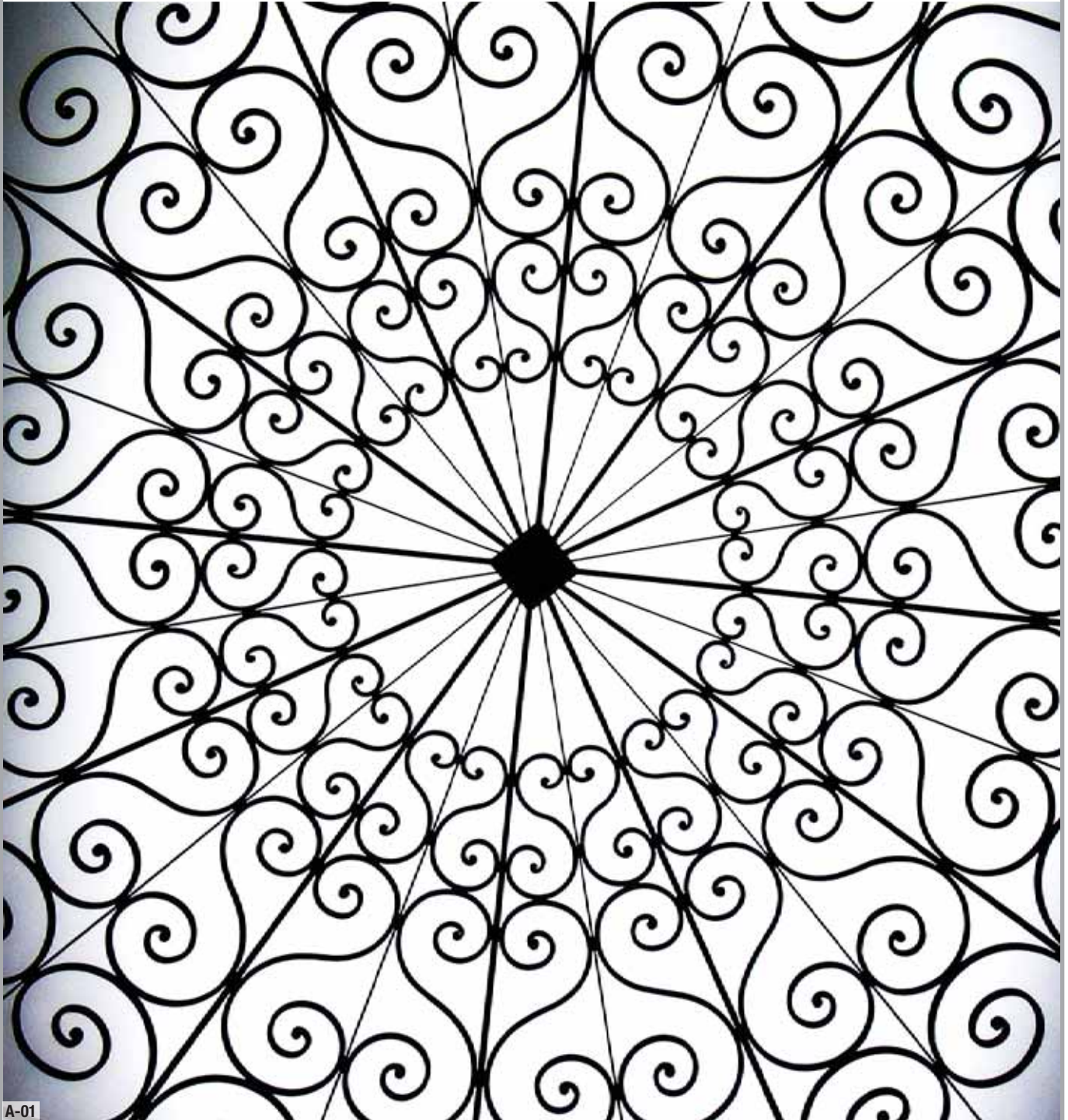




COMPASS
IRONWORKS



A-01

ARTISTIC WORKS DESIGN GUIDE

VOLUME 4. ALL RIGHTS RESERVED, COMPASS IRONWORKS 2024



COMPASS IRONWORKS

Elegance and Integrity

At Compass Ironworks, we carry into the 21st century the Amish traditions that forged our artistic sensibilities: honesty, integrity, and dedication to family, community, and craft. We do no mass production here; every installation reflects your unique needs. We are master craftsmen who work with both traditional and 21st century tools. At the end of the day, we close the doors and leave our tools at the shop, not to be touched until the next workday begins.

For more information about Compass Ironworks, please contact us Monday through Friday at (717) 442-4500.



ARTISTIC DESIGN GUIDE

ARTISTIC WORKS	4
ARCHITECTURAL STRUCTURES	12
DOORS.....	13
EGRESS LADDER AND GRATE	15
GLASS WALLS	16
PERGOLAS.....	17

When you see these icons on pages throughout the Design Guide, it indicates the following:



Enhanced Physical Perimeter Security



Shore Environment Approved

Using metal as an artistic material has been in practice for many centuries. Past artist blacksmiths created many unusual forms of artistic expressions, many which can still be viewed and appreciated today.

While Iron can be very heavy and bulky, under the spell of forge and heat it can be hammered and formed into flowing, graceful and elegant shapes. Or geometric and abstract objects can be created. Also, natural and organic trees, flowers and patterns can be fashioned for art and nature lovers. As

Samuel Yellin said “Although Iron is the least expensive of all metals, there is no other material which lends itself to more beautiful treatment. Neither is there a material which can be worked more quickly.”

Various metals can be utilized, and they can be used singly, or, jointly to add contrast. The highly polished surface of stainless steel, the depth and character of bronze or treated surface of aluminum can all be phenomenal attributes to enhance the wow factor of an exceptional artistic piece.

Our craftsmen have the skills and experience to create realistic and lifelike tree sculptures. Various textures can be done to create bark effect. Trunks and branches can be hammered and special effects such as dead branches and knots can accentuate the visual experience. By heating and hammering twigs can be shaped and tapered. And with that magic spell of forge and heat, leaf shapes, textures, veins and characteristics can be created for a natural and realistic effect. With the correct finish, patina or color, a forged Iron tree sculpture can have a visual impact, unparalleled by any other material on earth!

An artistic element can provide the ultimate touch in a landscape area, an entry foyer, on the wall or ceiling, or in the center of an immaculate garden. Utilizing the correct finishing specifications, the correct protective layer will not only enhance the visual aspect, but also provide many, many years of corrosion protection to allow future generations the opportunity to enjoy a piece of excellent craftsmanship.

Metal artistry is probably the least understood of any mediums of the arts, yet it evokes such a huge response of love and appreciation when people view a piece of superbly executed work of art.

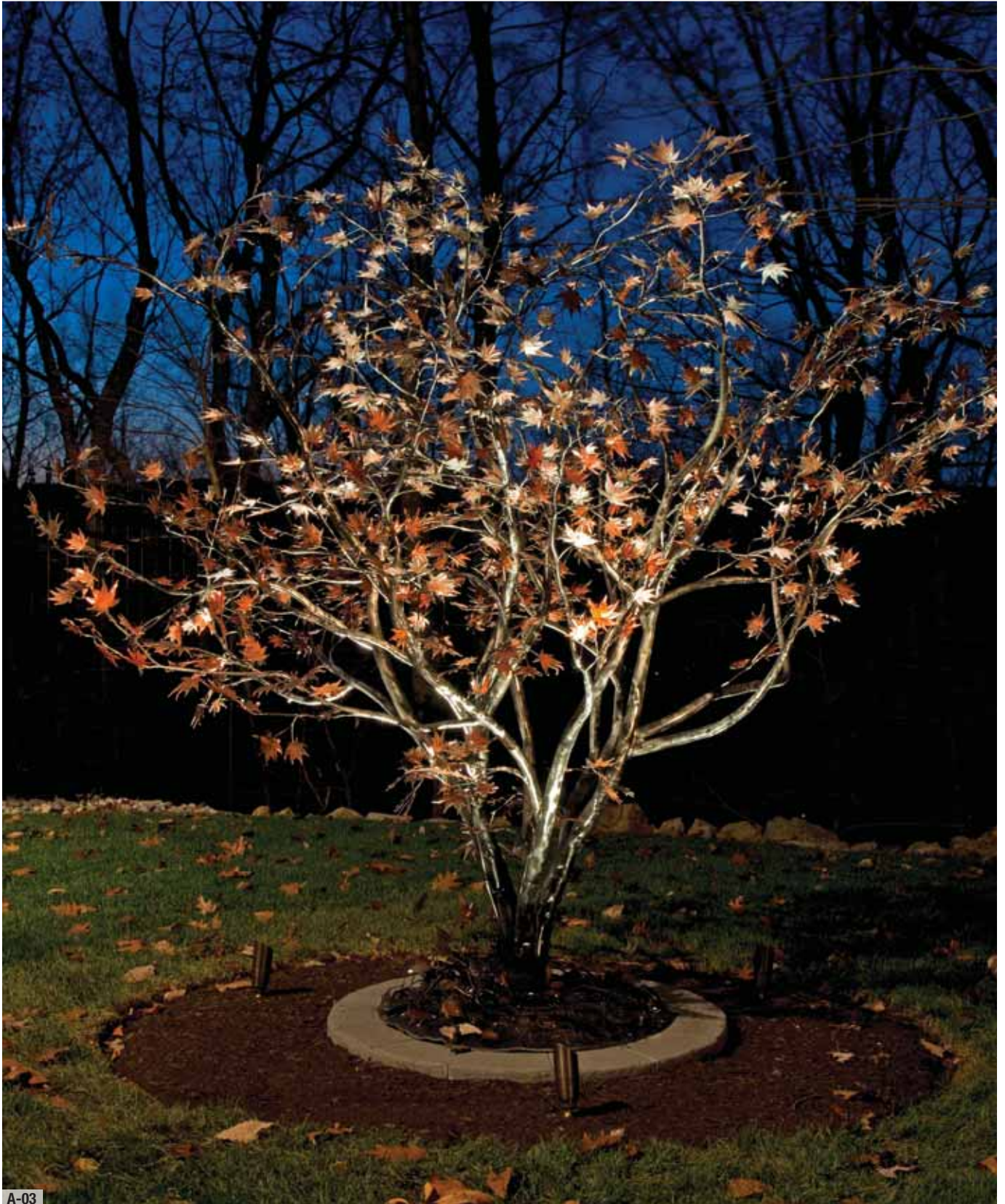
Dialogue with us to see how Compass can put your artistic dream into reality to accentuate your phenomenal spatial design.



A-02

Iron rose vine frieze creates an awesome contrast to the rich look of walnut.

ARTISTIC WORKS



A-03

Hand-brushed red detail on the leaves makes for a sensational and realistic sculpture.

ARTISTIC WORKS



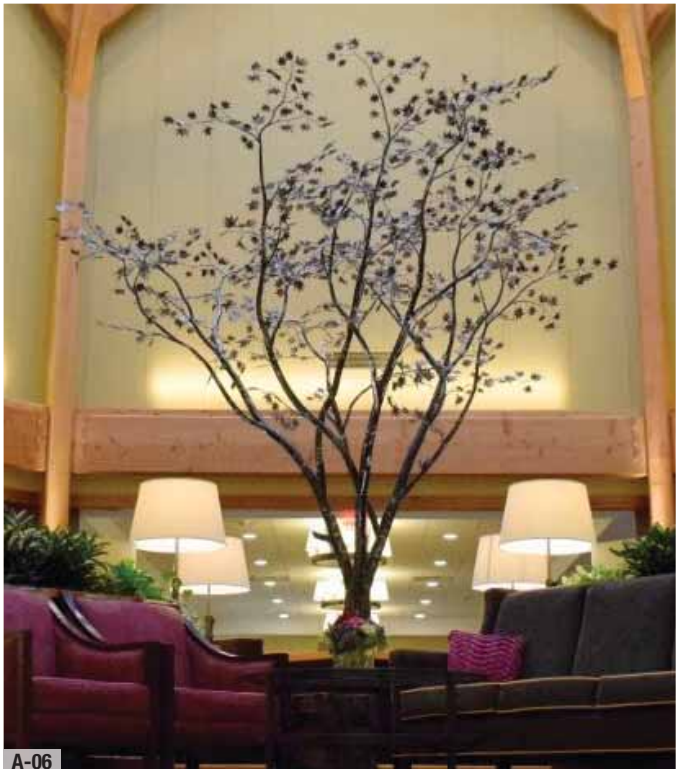
A-04

Forged grills and top transom enhance the front door



A-05

Tiny forged squirrel in Japanese Maple tree



A-06

12ft tall Japanese Maple Tree

ARTISTIC WORKS



A-07

Love sculpture for a wedding facility



A-08

Intertwining heart sculpture



A-09

3-dimensional forged sculpture of flowers and vase

ARTISTIC WORKS



A-10
Geometric Grill- Solid Bronze



A-11
Twisted wrought iron bar footrail

ARTISTIC WORKS



A-12

Wrought Iron tree sculpture room divider for upscale restaurant



A-13

Metal art sculpture beech tree



A-14

Corten Moon Gate

ARTISTIC WORKS



Petrified Maple Tree displays artistic sensibilities.



Iron clear coat displays awesome heat colors.



Hand forged twigs and leaves

ARTISTIC WORKS



A-18
Japanese Maple leaf detail



A-19
Custom Sleigh



A-20
Forged Japanese Maple handrail



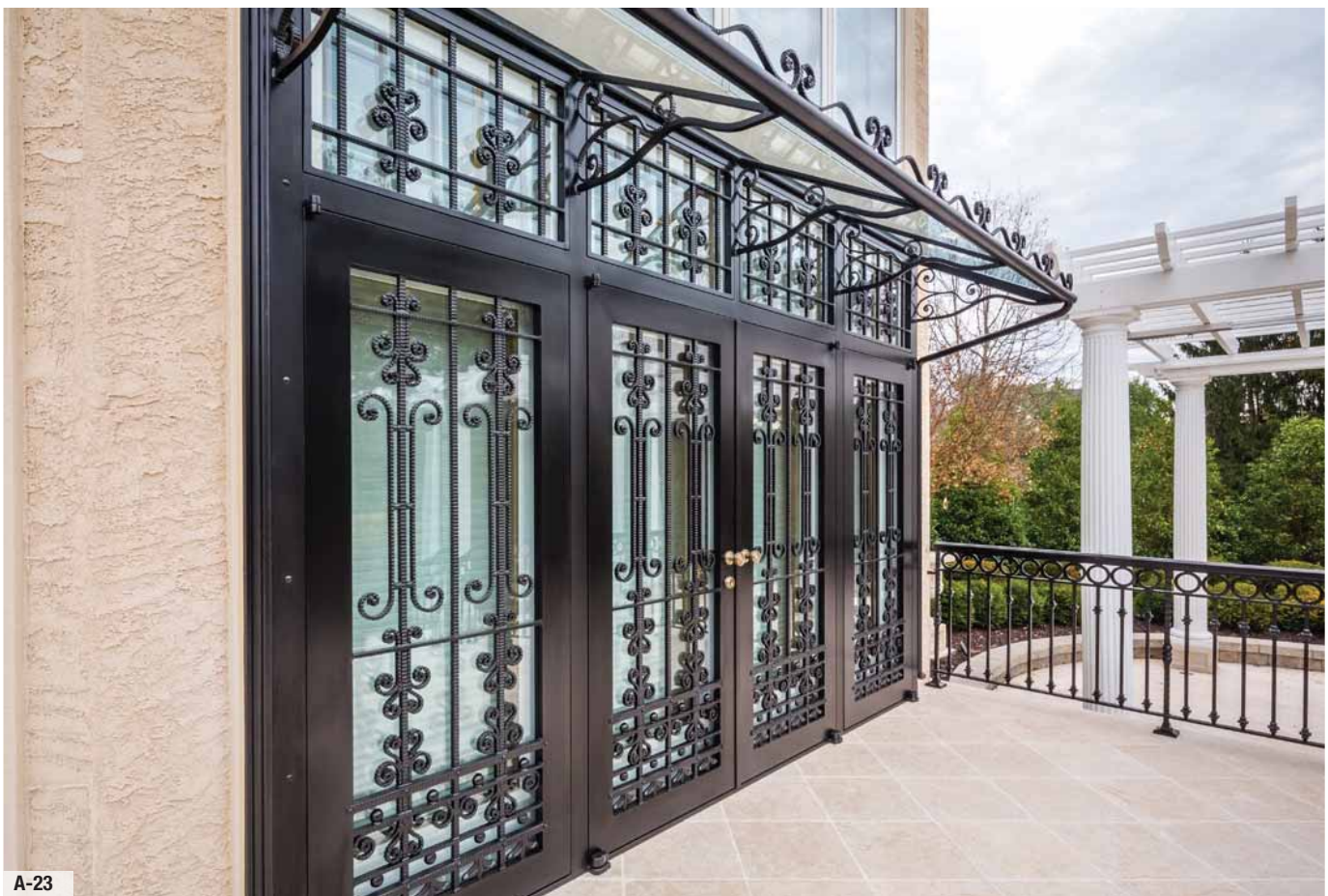
A-21

Texture and scrolls are crafted to perfection.



A-22

Repeating patterns exude bespoke detail



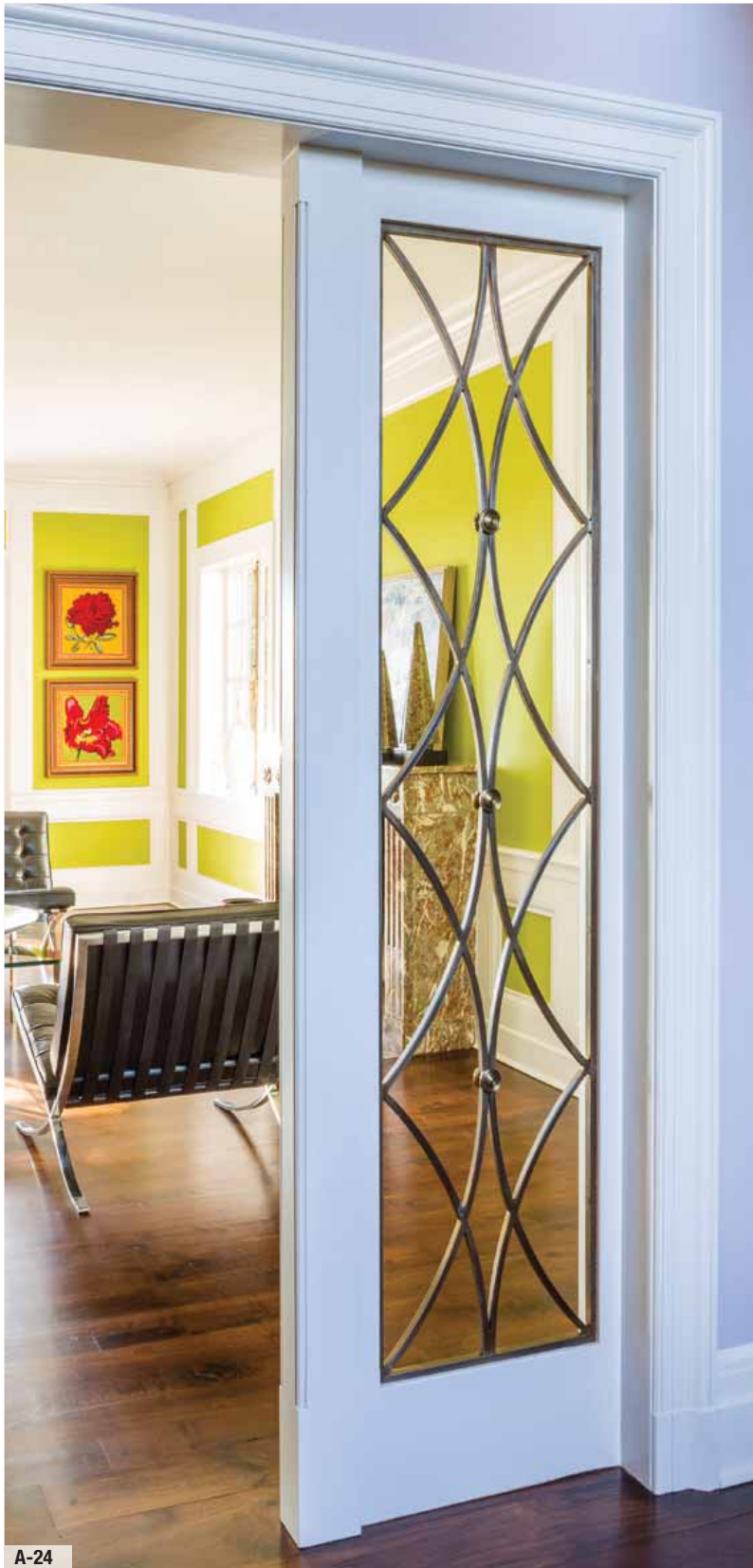
A-23

Quad doors with glass canopy provides great security with spectacular visual ambiance

DOORS



All Items on this spread have Enhanced Physical Perimeter Security and are Shore Environment Approved, except A-24 and A-25



A-24

Intertwining Ornamental window piece.



A-25

Bronze window rosette detail



A-26

Detail of client's initial on door panel.

DOORS



A-27
Custom Iron grills for front doors



A-28
Forged Front Door Grills



A-29
Forged iron door grills for wine room

EGRESS LADDER AND GRATE



All Items on this spread have Enhanced Physical Perimeter Security and are Shore Environment Approved



A-30

Grate that allows light and air to pass through, but strong enough to support a person.



A-31

Egress Ladder

PROVIDING A SOLUTION

Egress Ladder and Grate

Another item that we have been able to provide a solution is the egress ladder and grates that is required by code for basement living areas. Grates are typically built from ½” x 2” upright bars and hinged out from a wall, so that they can be easily opened and stay open as someone climbs up the ladder. We commonly create these out of Aluminum so that they are light enough to be opened easily, yet strong enough for someone to be able to walk.

GLASS WALLS



A-32

Custom glass wall offers panoramic view of a beautiful winerom.



A-33

Custom glass office doors and partition



A-34

Custom glass shower and bathroom enclosure.

PERGOLAS



A-35 and A-36 are Shore Environment Approved



A-35

Forged Iron Scroll dome for a grand Gazebo.



A-36

Underside view of Forged Iron Scroll Gazebo.

PERGOLAS



A-37

Modern Awning for grill area



A-38

Exterior modern shower enclosure -
Interior view



A-39

Exterior modern Shower enclosure - Exterior view

PERGOLAS



All Items on this spread are
Shore Environment Approved



A-40
Pergola structure detail



A-41
Pergola rafter detail



A-42
A 1934 Pergola replication adds personality to this tranquil terrace.

PERGOLAS



A-43
Pergola shade structure



A-44
Side mounted pergola to provide shade to the inside of the home.



A-45
Pergola that incorporated lighting, sound system, heat, and side shade screens for a year round comfortable entertainment area.

PERGOLAS



All Items on this spread are
Shore Environment Approved



A-46

Modern Shade structure on a beach front home that softens the harshness of the sun.



A-47

Pergola end post detail.



A-48

Pergola cantilever system off exterior wall.



COMPASS
IRONWORKS

1406 WEST KINGS HIGHWAY

GAP, PA 17527

717-442-4500

WWW.COMPASSIRONWORKS.COM